

# Firestop, Smoke, & Sound Solutions





Putting products and resources  
to work for you



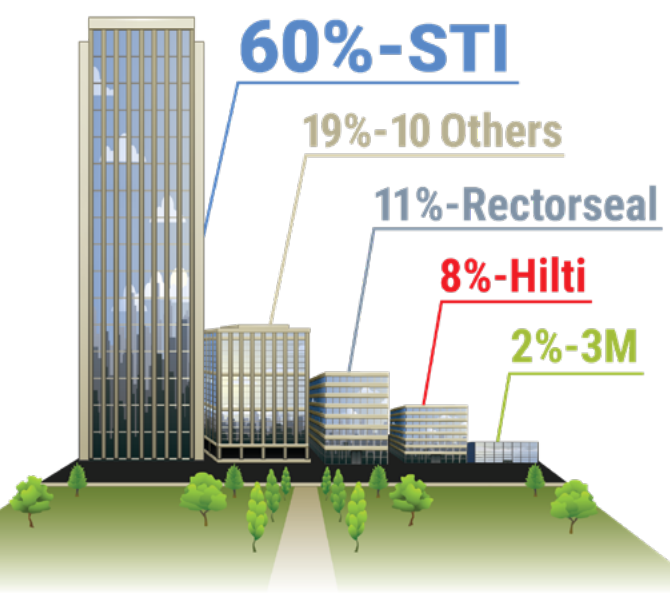
For 30 years, Specified Technologies Inc. has worked closely with the construction industry to create simple solutions to complex firestopping problems across a broad range of market segments and industries worldwide.

We offer the most comprehensive range of firestop products on the market and back them with the most UL® tested systems in the business—over 1,400—from penetration firestop systems and perimeter containment solutions to static and dynamic construction joints.

Because firestopping is our exclusive focus, we have been at the forefront of developing the most advanced and cost-effective firestop solutions on the market. STI Firestop is committed to supporting customers by providing sustainable firestop solutions, treating them like partners, and by consistently adding value beyond the sale.

You can depend on STI to provide expert advice, superior performance, premium quality products, best-in-class service, and training and support while delivering a total firestop solution.

**Most UL® Certified Perimeter Fire Containment Systems\* in the Industry**



\* STI has more UL® Certified perimeter fire containment systems than all other suppliers combined. Source: UL® Directory as of 1/2019

# Global presence

STI has offices and representation throughout the United States, Canada, Europe, the Middle East, India, China, Southeast Asia, and Latin America. We partner with over forty independent rep agencies and work with over 1,000 distribution outlets worldwide, providing extensive international coverage and offering our customers the personal attention they deserve.

## Worldwide Offices & Warehouses

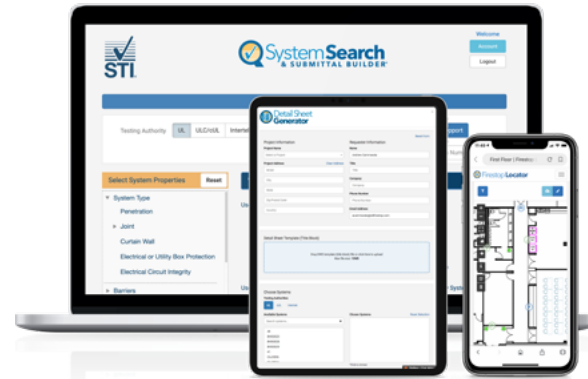


## Notable projects



# ACCESS STI

One Key. All Access.



STI provides a toolbox of innovative online programs to remove the complexity of designing firestop systems. A set of powerful tools assure that the right systems are selected for the fastest and most cost-effective installation.



Access Guide Specifications for products or solutions for common Firestop issues. STI offers easily editable Word formats for use in the creation of project specifications.



The Firestop University gives you access to all of STI's learning material and product tutorials.

- Receive instant notifications
- Mobile device compatible
- Earn "Blue Bucks" and redeemed for gift cards



- Find firestop systems on your phone, tablet, or web
- Streamlined firestop system submittal package
- Integrate user documents and company logos
- Embed engineering judgement documents



Firestop Locator® provides a method to simplify firestop documentation.

- Interactive floor drawings
- Track penetrations, joints, doors, dampers
- Mobile device compatible
- Streamline the Firestop tracking process
- Add team members to any project
- Turn-key solution with pre-printed QR labels
- Generate detailed reports (PDF and Excel)



STI Firestop offers BIM objects for architects and engineers to import into building models. Developed using Autodesk Revit®, these objects offer a quick and effective method to integrate firestop into your complex building design.



A powerful plugin for AutoDesk Revit®. The FCM (Firestop Clash Management) plugin uses clash detection to find locations where penetrants meet fire-rated barriers and automatically selects the appropriate firestop systems. It removes the complexity of designing firestop systems and ensures that when it comes time for construction, the systems selected provide the fastest installation and best installed cost.



Generate a Customized LEED® Credit Letter for submission in any project.



Generate a selection of firestop system details on a CAD detail sheet.



STI's engineering service experts are ready to help you optimize productivity during design, construction, and post-construction. They work in conjunction with our world-renowned engineering team, offering solutions to complex firestopping problems to help you ensure code compliance.

#### ► Research & Development

STI's philosophy is solely focused on firestop innovation. It's all we do. Our engineering development team consistently pushes the envelope to develop new sustainable products and systems to enhance life safety protection.

#### ► On-site Fire Lab

STI is a UL® Approved testing facility equipped with a state-of-the-art environmentally friendly burn furnace. Tests are performed on a consistent basis in order to quickly develop new products and standards for the firestop industry.

#### ► Engineering Services Team

The largest resource of firestop experts in the industry under one roof that deliver timely solutions for:

- Engineering judgments
- Custom firestop training
- Project plan review
- Documentation for AHJ's
- Technical inquiries & LEED letters
- Specification review
- Building Information Modeling (BIM)
- Upfront detail sheet generation



Engineering Judgments  
in 24\* hours  
or less

Engineering judgments are critical for expediting your projects. Waiting for answers costs you time and money – *why wait?*

We deliver EJ's within 24 hours on average.

\*Average turnaround time.

# Find firestop solutions by application

Find the products designed for the work you do.

For your convenience every product in this guide lists its features and benefits, test standards and approvals, and illustrates common applications. If you have any questions, don't hesitate to give us a call at 800-992-1180 ext 1.

## Data Communications

- ▶ Overview ..... 7-9
- ▶ EZ Path® Fire-Rated Pathway 44+ ..... 10
- ▶ EZ Path® Fire-Rated Pathway 33 ..... 10
- ▶ EZ Path® Fire-Rated Pathway 22 ..... 11
- ▶ EZ Path® Retrofit Devices ..... 11-12
- ▶ EZ-Firestop® Grommets ..... 12
- ▶ EZ Path® Smoke & Acoustical Pathway ..... 13
- ▶ SpecSeal® Ready® Sleeve ..... 14
- ▶ SpecSeal® Ready® Split Sleeve ..... 14
- ▶ SpecSeal® SSB Firestop Pillows ..... 14
- ▶ SpecSeal® CS Composite Sheet ..... 15
- ▶ SpecSeal® FP Intumescent Firestop Plugs ..... 15
- ▶ SpecSeal® SSP Putty ..... 15

## Perimeter Fire Containment

- ▶ Overview ..... 25-27
- ▶ Quick Clip® Field Installation System ..... 28
- ▶ Quick Clip® Factory Installation System ..... 28
- ▶ SpecSeal® Window Wall Gasket ..... 29
- ▶ SpecSeal® Connection Protection ..... 29
- ▶ SpecSeal® AS200 Elastomeric Spray ..... 29
- ▶ FastTack® Firestop Spray ..... 30

## Clinical Portals

- ▶ Clinician Patient Access Device ..... 34

## Mechanical, Electrical, Plumbing

- ▶ SpecSeal® SSS Intumescent Firestop Sealant ..... 16
- ▶ SpecSeal® LCI Intumescent Firestop Sealant ..... 16
- ▶ SpecSeal® LC Endothermic Sealant ..... 16
- ▶ SpecSeal® SSM Firestop Mortar ..... 17
- ▶ SpecSeal® SIL Silicone Sealant ..... 17
- ▶ SpecSeal® WF Firestop Caulk ..... 17
- ▶ SmokeBlock® Fireblock & Draftstop Caulk ..... 18
- ▶ SmokeBlock® Fireblock Foam ..... 18
- ▶ SpecSeal® Smoke 'N' Sound Spray ..... 18
- ▶ SpecSeal® Smoke 'N' Sound Sealant ..... 19
- ▶ SpecSeal® LCC Intumescent Firestop Collars ..... 19
- ▶ SpecSeal® RTC Intumescent Firestop Collars ..... 19
- ▶ SpecSeal® SSC Intumescent Firestop Collars ..... 20
- ▶ SpecSeal® SIS Intumescent Sleeve ..... 20
- ▶ SpecSeal® CF Closet Flange Firestop Gaskets ..... 20
- ▶ SpecSeal® SSW Intumescent Wrap Strips ..... 21
- ▶ SpecSeal® SSB Intumescent Firestop Pillows ..... 21
- ▶ SpecSeal® CS Composite Sheet ..... 22
- ▶ SpecSeal® CID Cast-In Firestop Device ..... 22
- ▶ FyreFlange® HVAC Firestop Angle ..... 22
- ▶ SpecSeal® FP Intumescent Firestop Plugs ..... 23
- ▶ SpecSeal® EP Powershield™ Electrical Box Insert ..... 23
- ▶ SpecSeal® SSP Putty & Putty Pads ..... 23
- ▶ E-Wrap™ Endothermic Wrap ..... 24
- ▶ SpecSeal® CS Cable Spray ..... 24

## Construction Joints

- ▶ SpecSeal® ES Elastomeric Firestop Sealant ..... 31
- ▶ SpecSeal® AS200 Elastomeric Spray ..... 31
- ▶ SpecSeal® LC Endothermic Sealant ..... 31
- ▶ SpecSeal® SIL Silicone Sealant ..... 32
- ▶ SpeedFlex® Joint Profile ..... 32
- ▶ SpeedFlex® TTG Track Top Gasket ..... 32
- ▶ SpecSeal® Smoke 'N' Sound Spray ..... 33
- ▶ SpecSeal® Smoke 'N' Sound Sealant ..... 33

## The Smart Choice.

**EZ Path® saves time, money, and resources by removing ongoing downstream costs.**

Only EZ Path® helps you avoid citations and costs associated with non-compliance. Other sleeves require constant upkeep, ongoing maintenance, and inspection to ensure compliance.

You can never be certain that other sleeves have been activated, plugs and putty have been replaced, or that they have been properly sealed to meet codes. And now that The Joint Commission mandates **60 DAY RFIs** (Requirements for Improvement) for survey deficiencies—ongoing code compliance is more important than ever.

## The Only Maintenance-Free Pathway.

**Annual inspection and maintenance of firestop systems is required by code.**

An Evaluation Service Report (ESR)\* was issued on May 20, 2016 by UL® for EZ Path® Fire-Rated Pathways confirming code compliance with the International Building Code® (IBC), International Fire Code® (IFC), and NFPA 101, "Life Safety Code®" (LSC). The report goes on to confirm that, when properly installed—EZ Path® Pathways are exempt from ongoing maintenance.

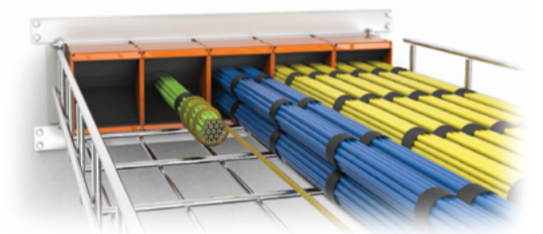
Unlike other sleeves, EZ Path® has no moving parts and requires no action to activate the internal sealing mechanism—making it the **only rated firestop device that is compliant right out of the box.**

## The Only Pathway that Pays for Itself.

**Other sleeves incur enormous ongoing costs over the lifecycle of the building.**

EZ Path® offers the ultimate in flexibility and can virtually eliminate fines due to non-compliance, increasing your savings over and over again. EZ Path® is a fully sustainable cable pathway solution for the lifetime of your building.

- ▶ Ends downstream maintenance & inspection costs
- ▶ Eliminates ongoing fire & smoke sealing costs
- ▶ Allows remote cable pulls through multiple barriers
- ▶ Reduces unnecessary trips above the ceiling
- ▶ Limits liability & decreases exposure to pathogens



**“Most cable penetrations were found to be out of compliance except for EZ Path.”**

Global Fire Protection  
Inspections Department



**EZ Path® Fire-Rated Pathways do not require regular maintenance...**

Evaluation Service Report  
Underwriters Laboratory



**“Over its lifecycle, EZ Path® pays for itself many times over.”**

Jeff Combs  
Fire Marshal, Major U.S. Medical System

FBC™ System Compatible indicates that this product has been tested, and is monitored on an ongoing basis, to assure its chemical compatibility with FlowGuard Gold®, BlazeMaster® and Corzan® piping systems and products made with TempRite® Technology. The FBC System Compatible Logo, FBC™, FlowGuard Gold®, BlazeMaster®, Corzan® and TempRite® are trademarks of Lubrizol Advanced Materials, Inc. or its affiliates. IMPORTANT NOTICE: ALL STATEMENTS, TECHNICAL INFORMATION, AND RECOMMENDATIONS CONTAINED HEREIN ARE BASED UPON TESTING BELIEVED TO BE RELIABLE, BUT THE ACCURACY AND COMPLETENESS THEREOF IS NOT GUARANTEED.

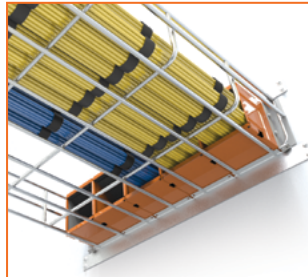
STI TYPICALLY WARRANTIES ITS PRODUCTS FOR ONE FULL YEAR. FOR COMPLETE DETAILS OF OUR STANDARD WARRANTY, PLEASE VISIT WWW.STIFIRESTOP.COM/LEGAL/WARRANTY

MADE IN THE USA - © 2022 SPECIFIED TECHNOLOGIES INC.

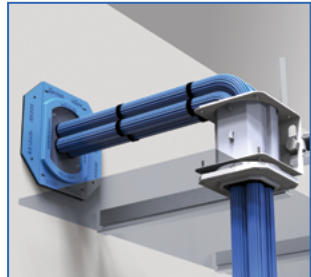


\*www.stifirestop.com/esr

# Applications



**0-100% cable fill**  
Self sealing & always compliant



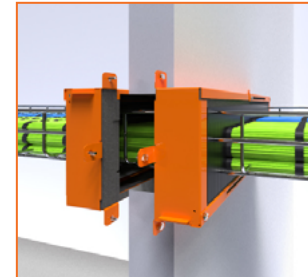
**Smoke & acoustical devices**  
For non-fire-rated walls



**Grommets**  
For single-cable applications



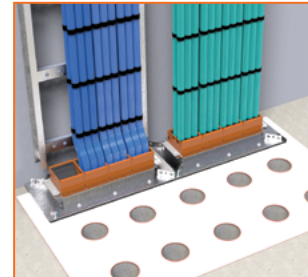
**High-density solutions**  
For space-saving horizontal applications



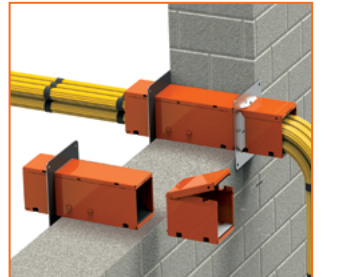
**Retrofit Devices**  
For non-compliant sleeves & cable trays



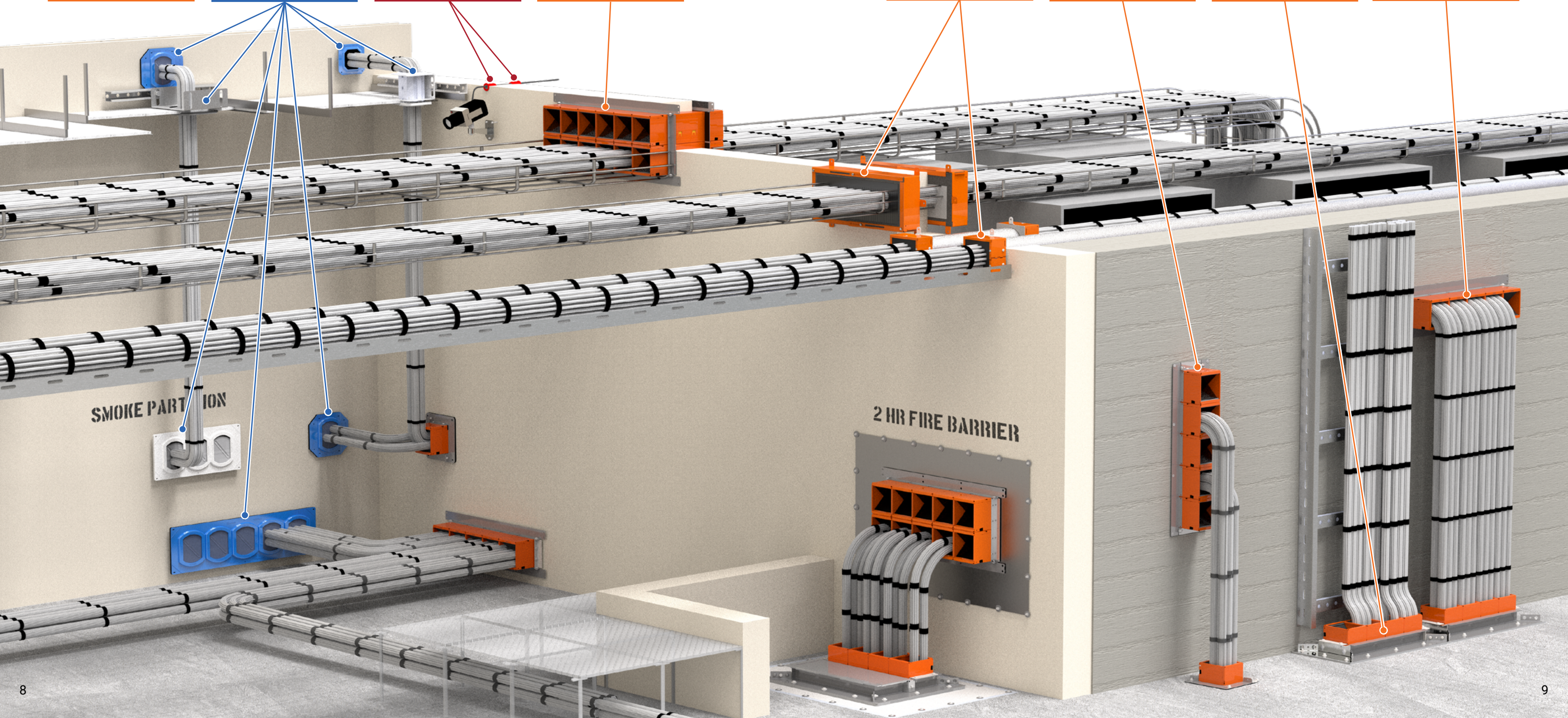
**High-density solutions**  
For space-saving vertical applications



**Smaller footprint**  
Greater cable capacity than traditional methods



**Extensions**  
For use with thicker walls

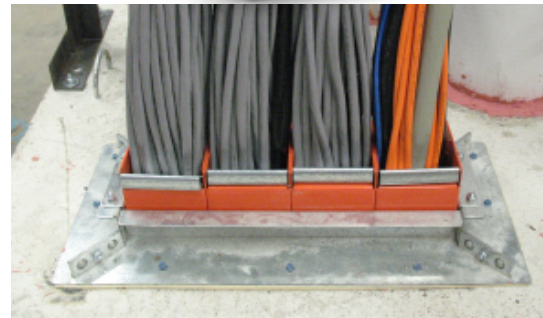


## Series 44+ Fire-Rated Pathway

The **EZ Path® Series 44+ Fire-Rated Pathway** is a maintenance-free pathway solution designed for high cable volume conditions through fire-rated walls and floors. The Series 44+ incorporates self-sealing intumescent pads that automatically adjust to the installed cable fill without the need for user manipulation. Under fire exposure, the intumescent pads expand and swell, resisting the passage of smoke and flame.

### Features & Benefits:

- Self Sealing design provides exceptional fire and smoke leakage ratings
- Allows for easy moves, adds, and changes
- Designed for new and existing conditions
- Variety of accessories available for any field condition
- Modular grid system for riser applications
- Greatest achievable cable density of any solution on the market



Scan or click for more information

## Series 33 Fire-Rated Pathway

The **EZ Path® Series 33 Fire-Rated Pathway** is a maintenance-free pathway solution for moderate cable volumes through fire-rated walls and floors. The Series 33 incorporates built-in intumescent pads that automatically adjust to cable fills. When exposed to flame and high temperatures, the intumescent pads expand to form a dense insulative char that prevents the passage of smoke and flame.

### Features & Benefits:

- Self Sealing design provides exceptional fire and smoke leakage ratings
- Allows for easy moves, adds, and changes
- Designed for new and existing conditions
- Variety of accessories available for any field condition
- Available in an array of colors for easy cable pathway management



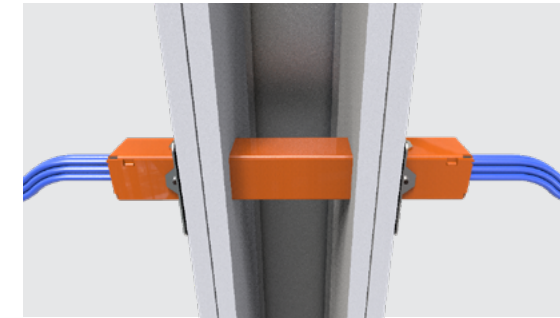
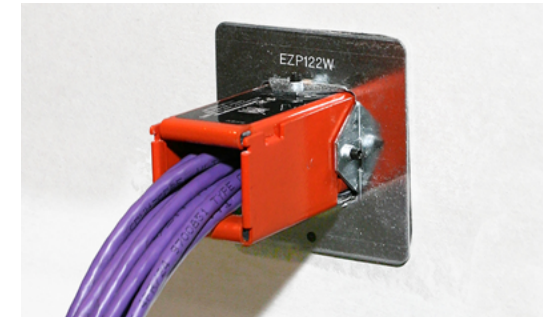
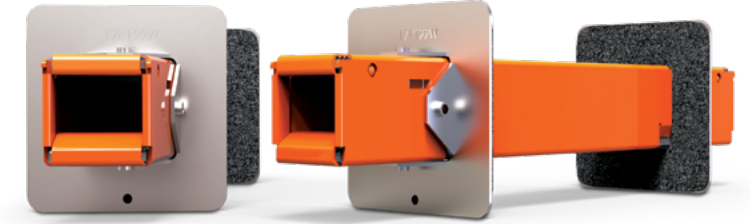
Scan or click for more information

## Series 22 Fire-Rated Pathway

The **EZ Path® Series 22 Fire-Rated Pathway** is a maintenance-free pathway solution for smaller cable bundles through fire-rated wall assemblies. The device is offered as a complete kit without the need for additional accessory products for installation.

### Features & Benefits:

- Self Sealing design provides exceptional fire and smoke leakage ratings
- Allows for easy moves, adds, and changes
- Designed for new and existing conditions
- Suited for round and rectangular openings



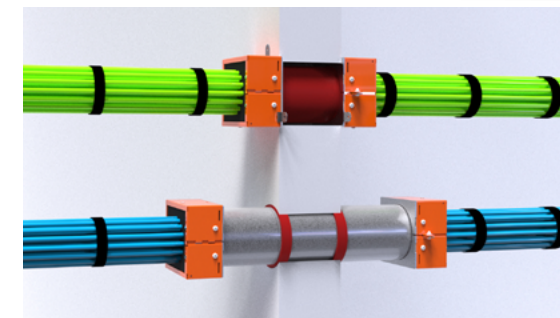
Scan or click for more information

## Retrofit Device

Non-compliant cable sleeves are the bane of every facilities team. Bring these deficient openings back into code compliance with the **EZ Path® Retrofit Device**. Its two-part clam shell design installs around projecting sleeves and cable bundles, restoring fire and smoke leakage performance. The EZ Path® Retrofit Device quickly and easily retrofits sleeves of up to 100% visual fill, restoring fire performance without the need for additional firestop products.

### Features & Benefits:

- Sized for 2 in. and 4 in. metallic sleeves
- Designed for cable sleeves and stubs
- Professional fit and finish
- Safety Orange for easy identification
- Suited for round and rectangular openings



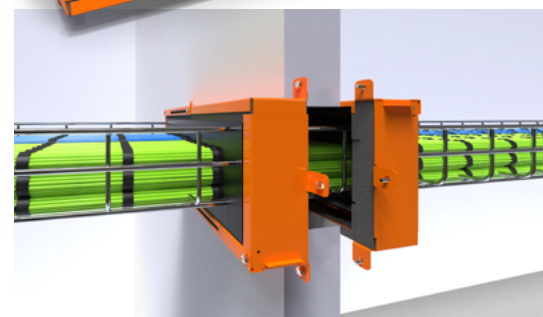
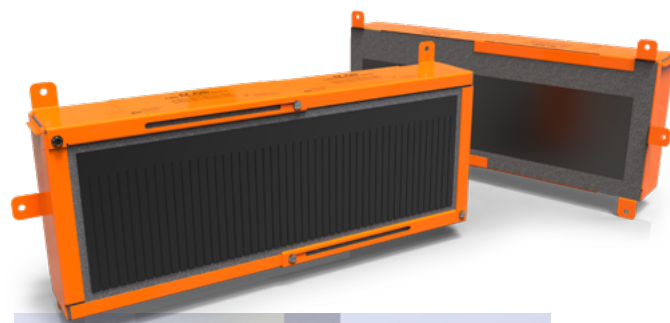
Scan or click for more information

## Cable Tray Retrofit Device

The **EZ Path® Cable Tray Retrofit Device** is designed for addressing non-compliant tray penetrations in fire-rated wall assemblies. It's split housing design installs around existing cable tray penetrations restoring fire-resistance ratings. The EZ Path® Cable Tray Retrofit Device quickly restores compliance to cable tray penetrations loaded with up to 100% visual fill of cables.

### Features & Benefits:

- Tested in Concrete and Gypsum Board Walls
- Sizes available for 12 in. (304.8 mm) to 24 in. (609.6 mm) wide cable trays
- Tested cable fills from 25 up to 100%
- Suitable for ladder and wire basket style cable trays
- Safety Orange for easy identification



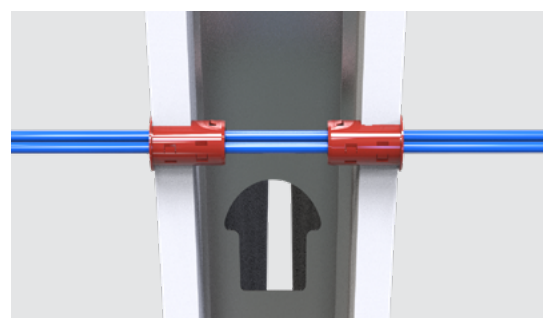
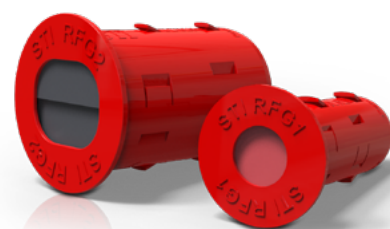
Scan or click for more information

## EZ-Firestop® Grommet

**EZ-Firestop® Grommets** make sealing penetrations of individual and small bundles of cables through gypsum board walls a snap. Molded from premium plenum-plastics and incorporating a soft foam inner core, EZ-Firestop® Grommets eliminate the need for sleeves, firestop putties, and sealants.

### Features & Benefits:

- Suited for addressing single membrane or complete through-penetrations
- Available as a single cable or multiple cable solution
- Ideal for alarm, security, or wireless access point installations
- Designed for 1 & 2 hr fire-rated gypsum board wall assemblies
- Professional finished appearance



Scan or click for more information

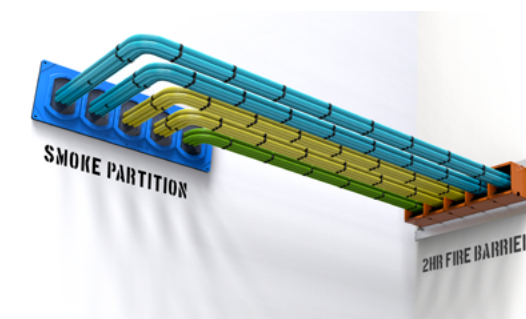
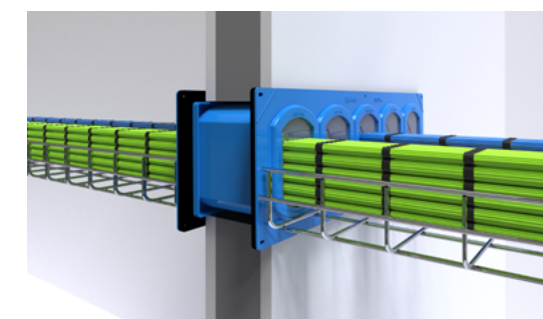
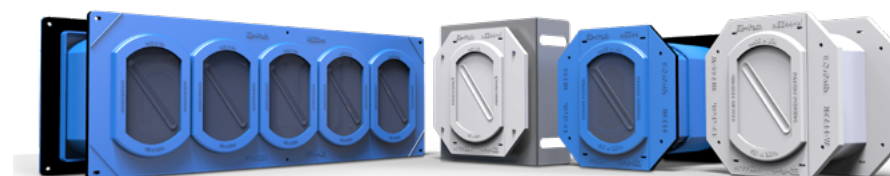
## EZ Path® Smoke & Acoustical Pathways

Designed for easy installation in non-fire-rated floor, ceilings, and walls, **EZ Path® Series 33NEZ & 44NEZ Smoke & Acoustical Pathways** provide exceptional smoke sealing and acoustical performance with tested and approved cable capacities ranging from 0 up to 100% visual fill.

### Features & Benefits:

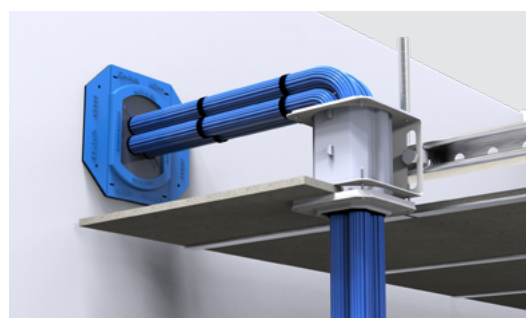
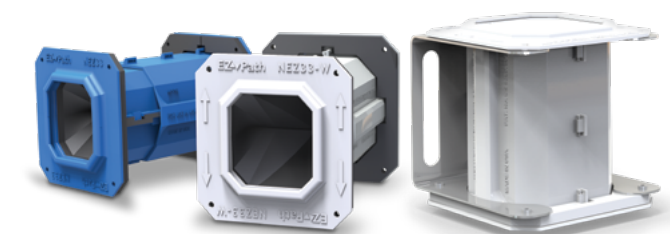
- Self Sealing design providing exceptional STC and L Ratings
- Gang Plate and Ceiling Mounted Options
- Allows for easy Moves, Adds, and Changes
- Professional Fit & Finish
- Devices available in Blue and White

## Series 44NEZ



Scan or click for more information

## Series 33NEZ



Scan or click for more information



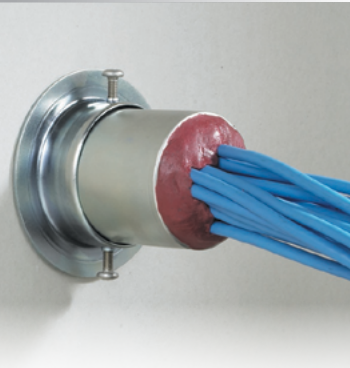
## Ready® Sleeve

**SpecSeal® Ready® Sleeves** are designed for new cabling penetrations where sleeves are required. Each Ready® Sleeve kit includes a preformed steel sleeve with rolled edges, steel escutcheon plates with intumescent gaskets, and a dose of our SpecSeal® SSP Firestop Putty. The rolled edges of each Ready® Sleeve eliminate the need for bushings while the included escutcheon plates and gaskets take the place of steel strut and strap supports.

- Offered in three sizes: 1 in., 2 in., & 4 in. diam.
- Complete kit including wall labels
- Sized for assemblies up to 10 in. thick
- Oversized escutcheon plates and gaskets available for larger openings



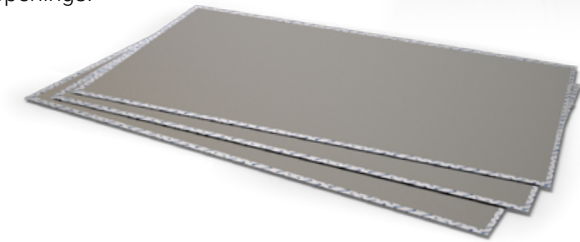
Scan or click for more information



## Composite Sheet

**SpecSeal® Composite Sheet** is the ideal solution for large openings where a permanent seal is required. Composite sheets consist of thin sheet steel, intumescent material, wire mesh, and aluminum foil. Used in conjunction with other SpecSeal® Firestop Products to seal large openings.

- Professional Fit and Finish
- Used with other SpecSeal® Firestop Products
- Easily cut with common sheet metal tools
- Tested for up to 4 Hours of fire resistance when tested to ASTM E814 (UL1479) or CAN/ULC-S115



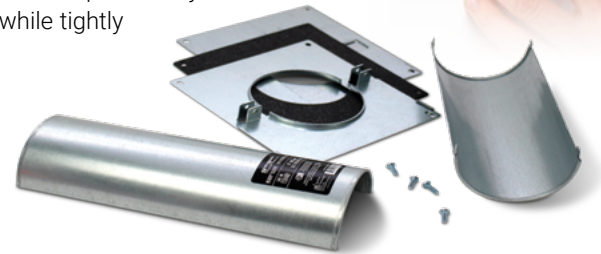
Scan or click for more information



## Ready® Sleeve Split Sleeve

**SpecSeal® Ready® Split Sleeve** kits easily install around existing cables. Each Ready® Split Sleeve kit includes two preformed steel sleeve halves with rolled edges, steel escutcheon plates with intumescent gaskets, and a dosage of our SpecSeal® SSP Firestop Putty. Ready® Split Sleeve's two-piece body and plates easily capture previously installed cables while tightly fastening to the penetrated barrier.

- Offered in three sizes: 1 in., 2 in., & 4 in. diam.
- Complete kit including wall labels
- Sized for assemblies up to 10 in. thick
- Oversized escutcheon plates and gaskets available for larger openings



Scan or click for more information



## Intumescent Firestop Plug

**SpecSeal® FP Intumescent Firestop Plugs** are easy to install, creating a robust seal against fire and smoke. Firestop plugs make an excellent solution for temporary installation overnight, as well as permanent long-term seals for blank openings, and cable penetrations through common construction such as concrete or gypsum board. Sized to fit 2 in. and 4 in. diameter openings, firestop plugs make sealing conduit stubs and sleeves a breeze.

- Testing in Gypsum walls and concrete walls and floors
- Soft and easily compressed into conduit stubs and sleeves
- No expiration date
- Partners with other SpecSeal® Firestop Products



Scan or click for more information



## Intumescent Firestop Pillows

**SpecSeal® SSB Firestop Pillows** easily compress and conform around any penetrant. Equally suited for new or existing conditions, SpecSeal® Pillows make short work of even the most complex through-penetration firestop conditions.

- Available in four different sizes
- Tested in a wide range of construction types and configurations
- Easily installs from a single side
- Re-enterable allowing for future work in previously sealed openings



Scan or click for more information



## Putty

**SpecSeal® SSP Firestop Putty** excels at sealing cabling penetrations and outlet boxes. SSP Putty is non-hardening and easily hand works around grouped cabling penetrations forming a re-enterable seal allowing for future work.

- Available in tubes or preformed pads
- Remains pliable and workable for the lifetime of the installation
- Acoustically tested
- Will not harden overtime



Scan or click for more information





## SpecSeal<sup>®</sup> SSS Intumescent Sealant

**SpecSeal<sup>®</sup> SSS Firestop Sealant** is a premium grade water-based Intumescent firestop sealant, that incorporates our proprietary two-stage intumescent technology making it the go to choice for any combustible or non-combustible penetrants. Only 1/2" applied depth will provide up to a 4 hr fire resistance rating when tested to ASTM E814/UL 1479.

- Patented Two-Stage Intumescent Technology
- Easily works into tight spaces between penetrants
- Compatible with CPVC Piping
- Can be sanded and painted to match its surroundings



Scan or click for more information

## SpecSeal<sup>®</sup> LCI Intumescent Sealant

**SpecSeal<sup>®</sup> LCI Firestop Sealant** is a water-based intumescent sealant intended for a wide range of through-penetration and construction joint applications. SpecSeal<sup>®</sup> LCI Sealant has excellent caulking properties making it easy to apply in vertical applications as well as overhead.

- Gun Grade material available in caulk tubes, sausages and pails
- Tested for through-penetration & construction joint configurations
- Compatible with CPVC Piping
- Can be sanded & painted to match its surroundings



Scan or click for more information

## SpecSeal<sup>®</sup> LC Endothermic Sealant

**SpecSeal<sup>®</sup> LC Endothermic Sealant** is a latex-based gun grade firestop sealant for construction joints and non-combustible penetrations. After application, LC Sealant cures to form a flexible seal against the propagation of fire. Under fire exposure, LC absorbs heat and release water vapor resisting the progress of smoke and flame.

- Installer Friendly, easily applied with standard caulking gun
- Can be troweled on for larger applications
- Tested for up to 4 Hours of fire resistance when tested to ASTM E1966/UL2079, ASTM E814/UL1479, and CAN/ULC-S115
- Listed in over 80 UL<sup>®</sup> Tested Firestop Systems



Scan or click for more information

## SpecSeal<sup>®</sup> SSM Firestop Mortar

**SpecSeal<sup>®</sup> SSM Firestop Mortar** is a lightweight, cost-effective solution for oversized openings in concrete walls and floors. Once mixed with water, SpecSeal<sup>®</sup> Mortar forms a lightweight, low density slurry that easily applies into concrete walls and floors. SpecSeal<sup>®</sup> Mortar cures quickly and will not split or crack due to freezing or changes in temperature.

- Can be poured, pumped, or troweled in place
- Partners with other SpecSeal<sup>®</sup> Firestop Products
- Durable permanent seal
- Re-penetrable allowing for future penetrants



Scan or click for more information

## SpecSeal<sup>®</sup> SIL Silicone Sealant

**SpecSeal<sup>®</sup> SIL300 Silicone Sealant** is a high performance silicone firestop sealant tested to resist the passage of smoke, flame and water through construction joints and through-penetrations. SIL300 Sealant cures to form a flexible seal and carries a Class 1 W Rating for water resistance (Per ANSI/UL1479).

- Available in a Gun Grade or Self Leveling
- Ozone and UV Resistant
- Excellent recovery from joint extension and compression
- Listed in over 175 UL<sup>®</sup> Tested Systems



Scan or click for more information

## SpecSeal<sup>®</sup> WF Intumescent Firestop Caulk

**WF300 Intumescent Firestop Caulk** is a latex-based firestop caulk designed for residential wood frame construction. WF300 Caulk is tested for addressing penetrations through wood/frame construction such as wood stud walls and floor/ceiling assemblies. Under fire exposure, WF300 expands to up to four times its original volume.

- Installer friendly, easily applies with standard caulking gun
- Suitable for combustible and non-combustible penetrants
- Tested for up to 3 Hours of fire exposure when tested to ASTM E814/UL1479



Scan or click for more information

## SmokeBlock® 136 Fireblock & Draftstop Caulk

**SmokeBlock® Caulk** is a non-combustible gun grade sealer for fireblocking and draft stopping in wood frame walls and floors. SmokeBlock® is designed for filling annular spaces around penetrants and along seams throughout the building envelope and is suitable for use in one or two family dwellings. Not suitable for use in fire-rated construction.

- Water-based for easy clean-up
- No shaking or mixing required
- Adheres to wood and masonry
- Meets ASTM E136



Scan or click for more information

## SmokeBlock® 200 Fireblock Foam

**SmokeBlock® Fireblocking Foam** installs in seconds filling voids and annular spaces around penetrants preventing the spread of smoke and hot gasses. SmokeBlock® Fireblocking Foam can be applied in both vertical and horizontal applications and is suitable to use in one and two family dwellings. Not suitable for use in fire-rated construction.

- Meets Fireblock/Draftstop requirements of IBC Section 718 & IRC Section R302.11
- Adheres to wood and masonry
- Dispensable at any angle
- Paintable



Scan or click for more information

## SpecSeal® SNS Smoke'N'Sound Acoustical Spray

**SpecSeal® Smoke 'N' Sound Spray** is a high quality acrylic latex spray designed for static or minimally dynamic linear joints or gaps. SpecSeal® Smoke 'N' Sound spray is formulated to adhere to all common construction surfaces and may be applied using airless spray equipment or with a brush (for small applications and touch ups).

- Water-based—for easy installation and cleanup
- Excellent smoke seal
- Acoustically tested—reduces noise transmission
- Safe—low VOCs—no solvents, and non-halogenated
- Auto-bonding—allows spray to adhere to cured spray
- Paintable (when dry)



Scan or click for more information

## SpecSeal® SNS Smoke'N'Sound Acoustical Sealant

**SpecSeal® Smoke 'N' Sound Sealant** is a high quality acrylic latex sealant designed for sealing through-penetrations (such as pipes, conduits, cabling, busways, openings), membrane penetrations (such as p-traps and outlet boxes) in smoke rated walls.

- Economical - high performance without the high price
- Water resistant - will not re-emulsify when dry
- Remains flexible - allows movement
- Acoustically tested, reduces noise transmission
- Paintable when dry



Scan or click for more information

## SpecSeal® LCC Intumescent Firestop Collars

**SpecSeal® LCC Firestop Collars** are factory-manufactured firestop devices sized to plastic pipes of up to 4 in. Trade Size. LCC Collars consist of a restraining collar with a factory applied intumescent ensuring the correct amount of material is applied every time.

- Sized for 1-1/2 in., 2 in., 3 in., & 4 in. Trade Size Combustible Pipes
- Installs quickly and eliminates waste
- Tested in a variety of construction types



Scan or click for more information

## SpecSeal® RTC Intumescent Firestop Collars

**SpecSeal® RTC Firestop Collars** adapt to the size combustible pipe that you are working with. One collar is designed to address standard 3 in. & 4 in. plastic pipes as well as their associated couplings. RTC Firestop Collars adaptable nature make them an excellent tool to have at hand when bringing combustible penetrations up to code.

- One Collar fits 3 in. pipe, 3 in. pipe coupling, 4 in. pipe, & 4 in. pipe coupling
- Fits into tight spaces
- Low installed cost
- Tested in a variety of construction types



Scan or click for more information

## SpecSeal<sup>®</sup> SSC Intumescent Firestop Collars

**SpecSeal<sup>®</sup> SSC Firestop Collars** are factory-manufactured firestop devices sized to plastic pipes of up to 6 in. Under fire exposure, they quickly expand and collapse combustible piping to resisting the passage of smoke and flame.

- For 1-1/2 in., 2 in., 3 in., 4 in., 6 in. Trade Size Combustible Pipes
- Installs quickly and eliminates waste
- Tested to CAN/ULC-S115 at 50 PA (0.20 in. water)



Scan or click for more information

## SpecSeal<sup>®</sup> SIS Intumescent Sleeve

**SpecSeal<sup>®</sup> Intumescent Sleeves** protect metallic and plastic pipes penetrating through fire rated floors. Utilizing a flexible steel sleeve body and molded intumescent lining, it wraps around pipes ranging from 2 in. to 4 in. Trade size.

- Rapid expansion - closes off burning pipes quickly
- Thin profile - use it in all the tight spots
- Flexible & durable - no loose flakes (eye hazards)
- Lower installation cost

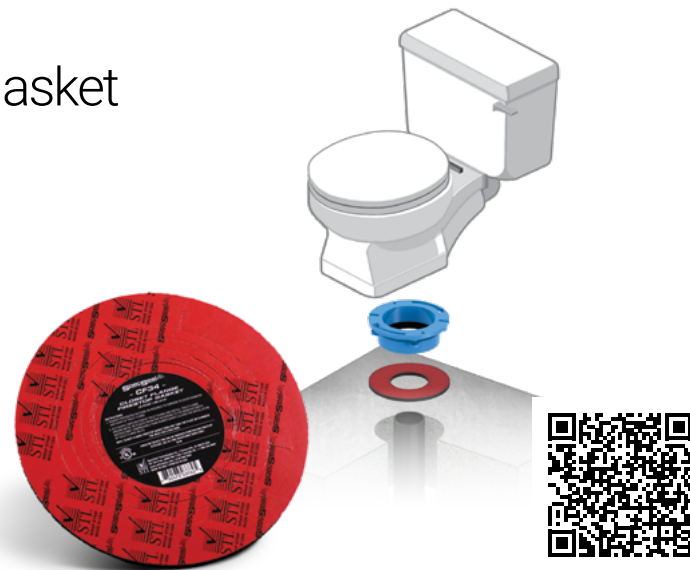


Scan or click for more information

## SpecSeal<sup>®</sup> CF Closet Flange Firestop Gasket

**SpecSeal<sup>®</sup> Closet Flange Firestop Gaskets** are one-piece, molded rubber, intumescent pads that install beneath a closet flange to effectively firestop the opening.

- Seamless fit for fast, easy installation with no tools required
- Lower installation cost
- Installs from the top, saving labor



Scan or click for more information

## SpecSeal<sup>®</sup> SSW Intumescent Wrap Strips

**SpecSeal<sup>®</sup> SSW Wrap Strips** are available in 12 ft. rolls as well as individually pre-sized strips to minimize waste and speed up installation. When installed in conjunction with restraining steel, SSW Wrap Strips are able to collapse non-metallic piping of up to 12 in. diam.

- RED/RED2 for Plastic piping up to 6 in. Trade Size
- BLU/BLU2 for Plastic piping up to 12 in. Trade Size
- SSW comes in a variety of thicknesses and widths for demanding applications.
- Tested in a variety of construction types

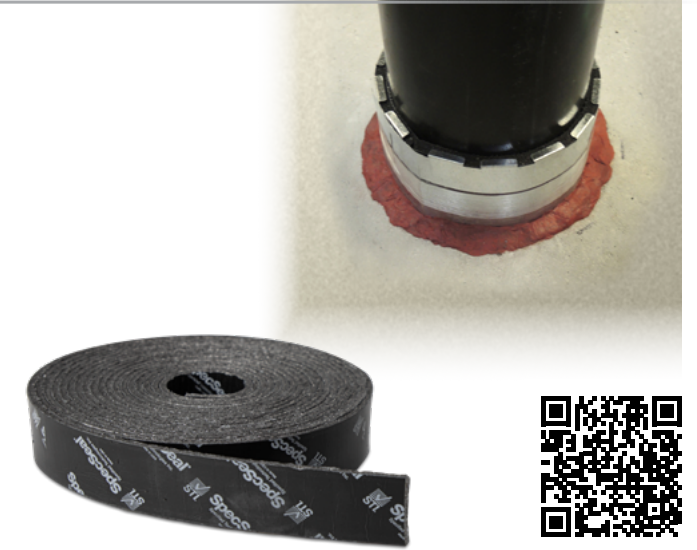


Scan or click for more information

## SpecSeal<sup>®</sup> SSW1000EX Wrap Strip

**SpecSeal 1000EX Wrap Strips** are highly flexible, elastomeric strips designed to firestop combustible penetrations in fire-rated floors, floor/ceilings, and walls..

- Rapid expansion - closes off burning penetrants faster
- High volume char - significant expansion seals off opening
- Water-resistant - no soluble or hygroscopic ingredients
- Highly flexible - no foil, easier to install
- Versatile - performer for a wide range of complex applications



Scan or click for more information

## SpecSeal<sup>®</sup> SSB Intumescent Firestop Pillows

**SpecSeal<sup>®</sup> SSB Firestop Pillows** easily compress and conform around any penetrant. Equally suited for new or existing conditions, SpecSeal<sup>®</sup> Pillows make short work of even the most complex through-penetration firestop conditions.

- Available in four different sizes
- Tested in a wide range of construction types and configurations
- Easily installs from a single side
- Re-enterable allowing for future work in previously sealed openings



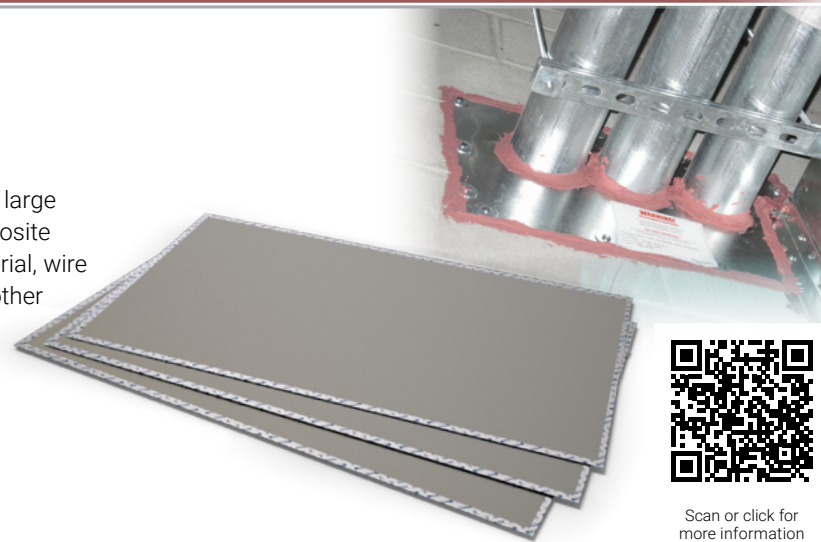
Scan or click for more information



## Composite Sheet

**SpecSeal® Composite Sheet** is the ideal solution for large openings where a permanent seal is required. Composite sheets consist of thin sheet steel, intumescent material, wire mesh, and aluminum foil. Used in conjunction with other SpecSeal® Firestop Products to seal large openings.

- Professional Fit and Finish
- Used with other SpecSeal® Firestop Products
- Easily cut with common sheet metal tools
- Tested for up to 4 Hours of fire resistance when tested to ASTM E814 UL1479 and CAN/ULC-S115



Scan or click for more information



## Cast-In Device

**SpecSeal® Cast-In Devices** are a sleeve, concrete core, firestop, and watertight seal rolled into a single device. Constructed with ABS Plastic and Polypropylene, this CID has excellent durability and rigidity. The device is bi-directional allowing for both floor and ceiling penetration. A single device is used for both metal and plastic piping accommodating heights up to 8" via cutting or for heights over 8" with extensions utilizing an adjustable pin. The CID includes a W-rating providing end-users maximum protection against water damage.

- A sleeve, concrete core, firestop, and watertight seal.
- Saves time and money by eliminating core drilling and additional firestopping steps.
- W-rating protects against water damage.
- Single device for metal and plastic piping while allowing for both floor and ceiling penetration.
- Device and extensions allow for varying concrete depths from 2-1/2" to 36" utilizing extensions with adjustable pin.



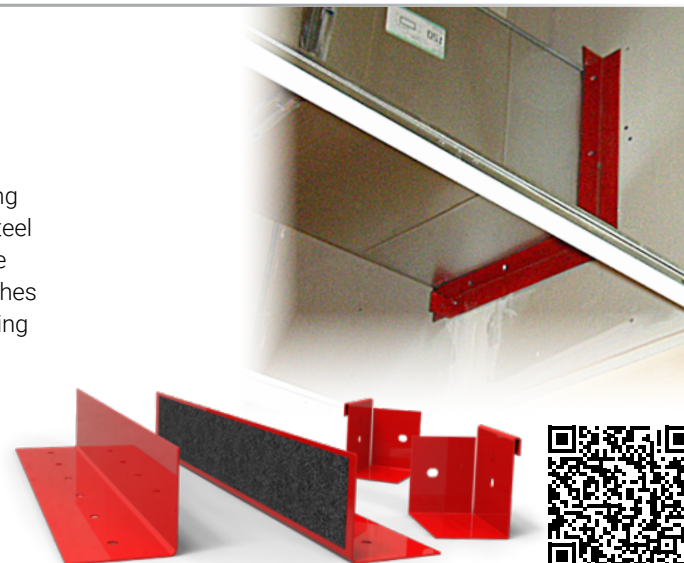
Scan or click for more information



## FyreFlange® HVAC Firestop Angle

**FyreFlange® Firestop Angle** is a single step solution to addressing HVAC Ductwork penetrations. FyreFlange® consists of a heavy steel angle with an intumescent gasket, sealing against fire and smoke while reinforcing ductwork under exposure. Eliminate the headaches of staging and multiple inspections of traditional HVAC firestopping with FyreFlange®.

- Powder coated red for easy identification and inspection
- Eliminates the need for sealants and forming materials
- Easily installs around bare and insulated rectangular ductwork in previously sealed openings



Scan or click for more information



## Intumescent Firestop Plug

**SpecSeal® FP Intumescent Firestop Plugs** are easy to install, creating a robust seal against fire and smoke. Firestop plugs make an excellent solution for temporary installation overnight, as well as permanent long-term seals for blank openings, and cable penetrations through common construction such as concrete or gypsum board. Sized to fit 2 in. and 4 in. diameter openings, firestop plugs make sealing conduit stubs and sleeves a breeze.

- Testing in Gypsum walls and concrete walls and floors
- Soft and easily compressed into conduit stubs and sleeves
- No expiration date
- Partners with other SpecSeal® Firestop Products



Scan or click for more information



## PowerShield® Electrical Box Insert

**SpecSeal® EP Powershield® Electrical Box Inserts** install within steel electrical boxes directly against the back of the box. Powershield® Box inserts are equally suited for remediation as well as preinstallation before the boxes have made it to the job site. Powershield® Box inserts incorporate pre-scored openings allowing for easy installation around ground lugs.

- Tested in boxes up to 4-1/2 in. x 14 in. x 2-1/2 in.
- Suitable for Steel and Plastic Face Plates
- Easily preinstalls before shipping to the jobsite
- Eliminates the need for putty in previously sealed openings



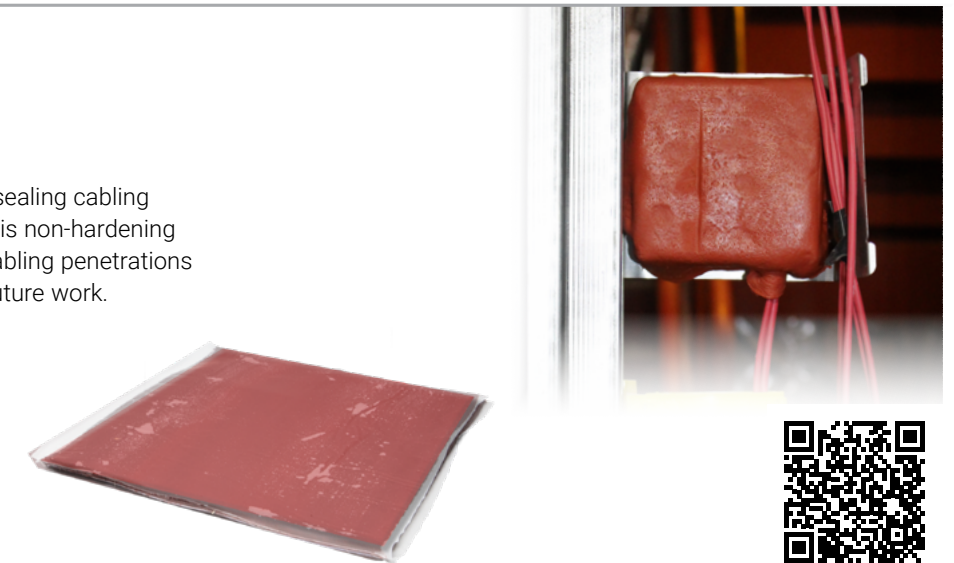
Scan or click for more information



## Putty Pads

**SpecSeal® SSP Firestop Putty** excels at sealing cabling penetrations and outlet boxes. SSP Putty is non-hardening and easily hand works around grouped cabling penetrations forming a re-enterable seal allowing for future work.

- Available in tubes or preformed pads
- Remains pliable and workable for the lifetime of the installation
- Acoustically tested
- Will not harden overtime



Scan or click for more information



## E-Wrap® Endothermic Wrap



**E-Wrap® Endothermic Wrap** is a protective wrap designed for fire protection of critical circuits and infrastructure such as fire pumps, signaling equipment, elevators, alarms, process control equipment, or emergency responder communications enhancement systems (ERCES). E-Wrap® is also used for fuel oil pipe protection. When installed around Electrical Metallic Tubing (EMT), conduits, cable trays, or pipes, E-Wrap® releases chemically bound water to have a cooling effect providing up to 2 hours of circuit integrity ensuring continued operation under fire conditions.

- Flexible material – easy to install, even on small diameter conduits
- Tested with Electrical Metallic Tubing (EMT) and heavier conduits
- Fewer layers required for protection – better coverage per roll
- Endothermic – releases chemically bound water to have a cooling effect
- Weighs less than competing wraps
- May be used to achieve equal F&T Ratings on penetration firestop systems.
- Tested to ASTM E1725 for circuit integrity



Scan or click for more information



## Cable Spray



**SpecSeal® Cable Spray** applies quickly to grouped cables within cable trays, providing protection against cable jacketing ignition from direct fire exposure and slowing flame propagation. Cable Spray applies quickly with an airless spray rig, only requiring a minimum 1/8" wet applied thickness. Once cured, Cable Spray forms a flexible, water and weather resistance seal adhering to virtually all cable jacketing materials.

- Contains no inorganic fibers, asbestos, or solvents
- FM Approved to FM Approval Class: 3971
- Meets IEC 60331-21 & IEC 60332-3
- Passes IEEE 383/1202



Scan or click for more information

### System Coverage Breadth Matters

STI Firestop, the leader in tested and listed curtain wall perimeter fire containment systems, offers greater flexibility to conform to your design.

Perimeter fire containment systems are code mandated, and code officials, authorities having jurisdiction (AHJ), or other inspectors verifying building code compliance can scrutinize slab-edge conditions. More tested and listed systems means a greater probability of code conformance, and that keeps your project on track.

### Codes & Technology

Curtain wall perimeter fire containment systems are tested to ASTM E2307. This test method uses a two-story structure known as the intermediate scale multi-story test apparatus (ISMA). The ISMA structure subjects the test assembly to fire exposure from two sides simultaneously with an exterior burner that replicates a fire induced window break. A perimeter fire containment system must withstand the passage of flame from the lower floor to the upper floor via the gap between the floor and curtain wall.

Building codes, such as the International Building Code® (IBC) and NFPA® 5000, include provisions for preventing the floor-to-floor spread of fire and specifically refer to ASTM E2307.

### Tested and Listed Systems Ensure Code Compliance

STI Firestop understands the nuances of curtain wall and perimeter fire containment systems because of our commitment to research and development. With more tested and listed systems for perimeter fire containment systems than any other manufacturer, our versatile solutions conform to virtually any jobsite condition.

**Back Pan Curtain Walls:** Our patented shelf-system replicates real world curtain wall construction. It is the only practical system that can be built in a factory.

### Shorter Spandrels; Lower Sill Heights:

Accommodates more vision glass.

**More Facade Types:** Glass (opaque or clear), aluminum, stone, brick veneer, EIFS, GFRC, precast concrete, composite metal panels, and more.

**Multiple Insulation Attachments:** A variety of tested methods to support and attach curtain wall insulation offers unmatched flexibility in the field and lowers the overall cost of installation.

**Pipes & Cables Through Floor Gap:** Pipes for radiators or electrical cables are tested to pass through the safing gap.

**Fire Ratings:** Tested and listed systems up to 4 hours have you covered.

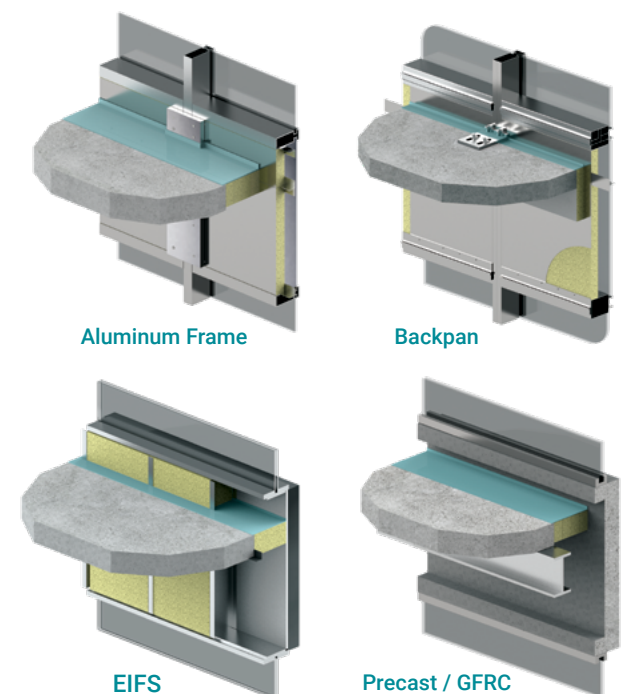
**All Major Mineral Wool Brands:** Testing for all commercially available mineral wool brands.

**Block Smoke Leakage:** Low L Ratings (<1 CFM/LF) included in systems to confirm ability of coating to limit air and smoke movement.

**Real World Movement:** Dynamic tests replicate real world movement ranges and remain practical to install for construction workers using common tools and methods.

**Acoustics:** Superior STC Ratings to help mitigate the effects of sound flanking at the slab edge.

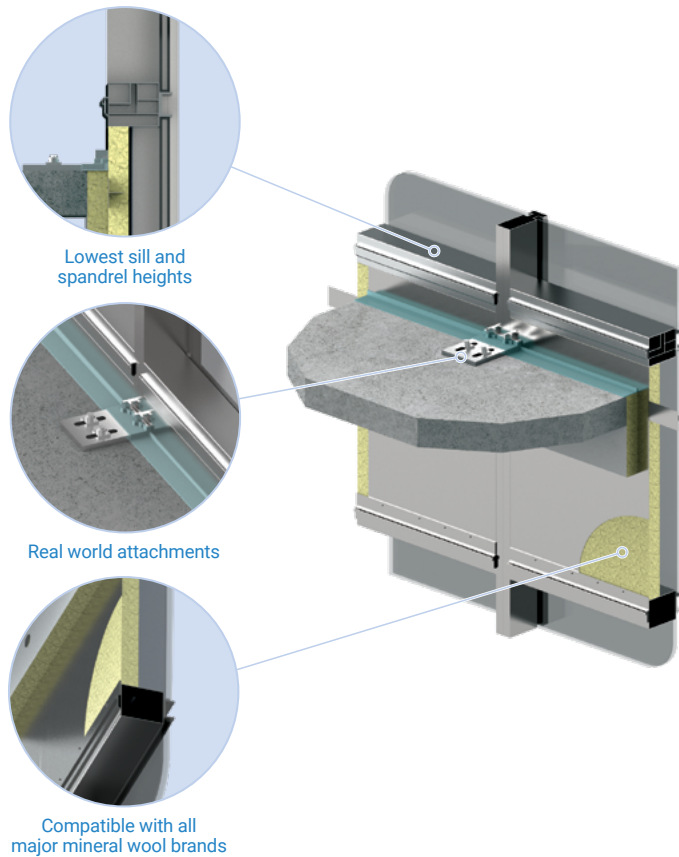
**Water-Resistance:** Products dry quickly and will not re-emulsify. Watertight/all weather grade available.



## Backpans

Unitized backpan designs have become increasingly popular, presenting a multitude of new challenges under fire conditions. During a fire, deflection of the steel backpan can cause severe repercussions on the performance of the spandrel insulation, the safing insulation, and the firestop spray. Our systems are engineered to maintain the integrity of the wall to meet code requirements.

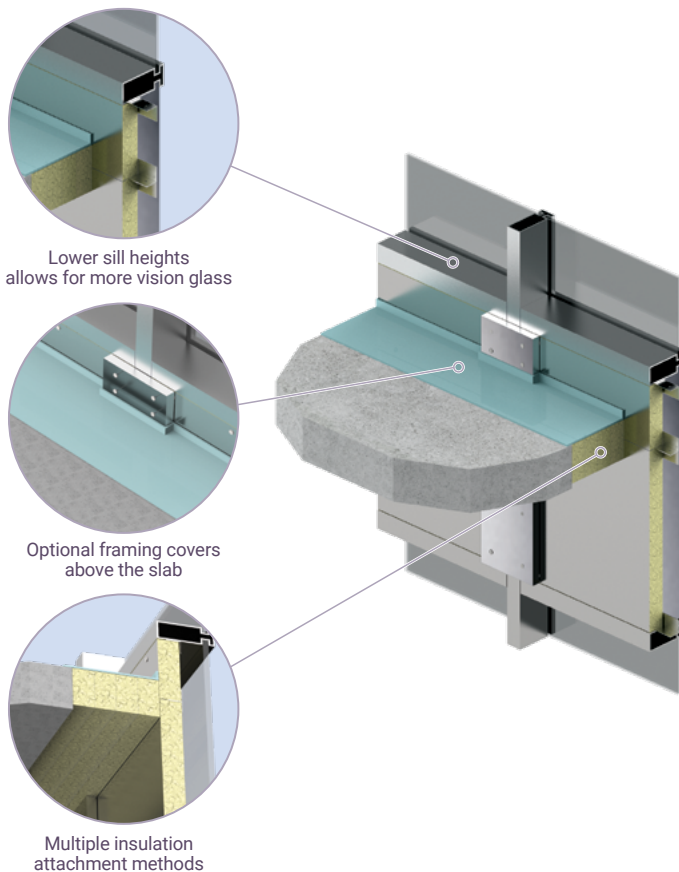
- One or two-piece tubular aluminum frames
- Minimum 22 gauge flush or recessed steel backpans vs. 18 gauge
- Lowest sill and spandrel heights
- Multiple spandrel types
  - Transparent or opaque glass panels
  - Aluminum panels and stone panels
  - Aluminum composite panels
- Optional shadow box for transparent glass panels
- Multiple insulation manufacturers
- Shortest transom spacing
- Shortest sill heights
- Documented "L ratings
- Penetration in the safing slot
- Vertical shear movement



## Aluminum Frames

STI has the most extensive testing for aluminum framed curtain walls whether factory-built unitized or field-fabricated stick. Our UL® Certified Systems provide the flexibility you need to complete your project on time with demonstrated code compliance.

- Aluminum tube systems with solid one-piece or split two-piece mullions and transoms
- I-beam mullions
- Lower sill heights and shorter spandrel panels
- Multiple spandrel types
  - Transparent or opaque glass panels
  - Aluminum or aluminum composite panels
  - Stone
- Optional shadow box systems for transparent glass panels
- Multiple spandrel insulation attachment methods
  - Continuous steel angles
  - Hat channels
  - Insulation hangers and steel pins
- Multiple insulation manufacturers
- Optional penetrations in the safing slot
- Documented L Ratings
- Penetration in the safing slot
- Vertical shear movement

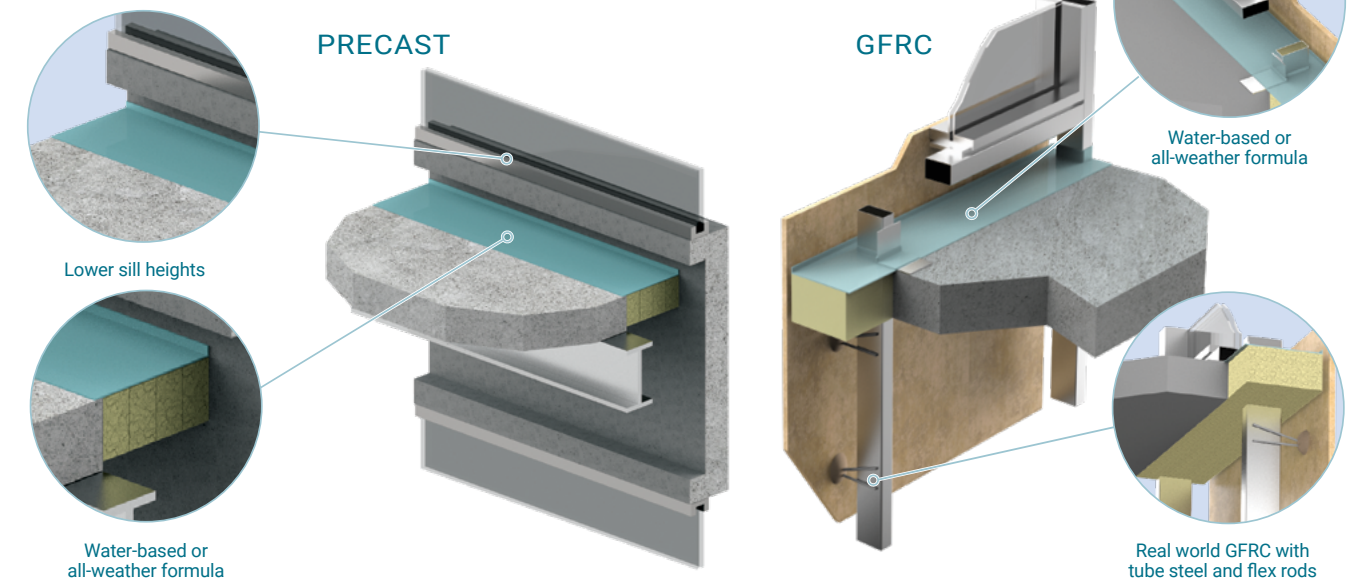


## Precast/GFRC

Coverage for precast concrete or GFRC is another one of our specialties, and our UL® Certified Systems are the most comprehensive.

- Lower sill heights for windows
- Traditional precast panels or precast composite panels (e.g. Slenderwall®)

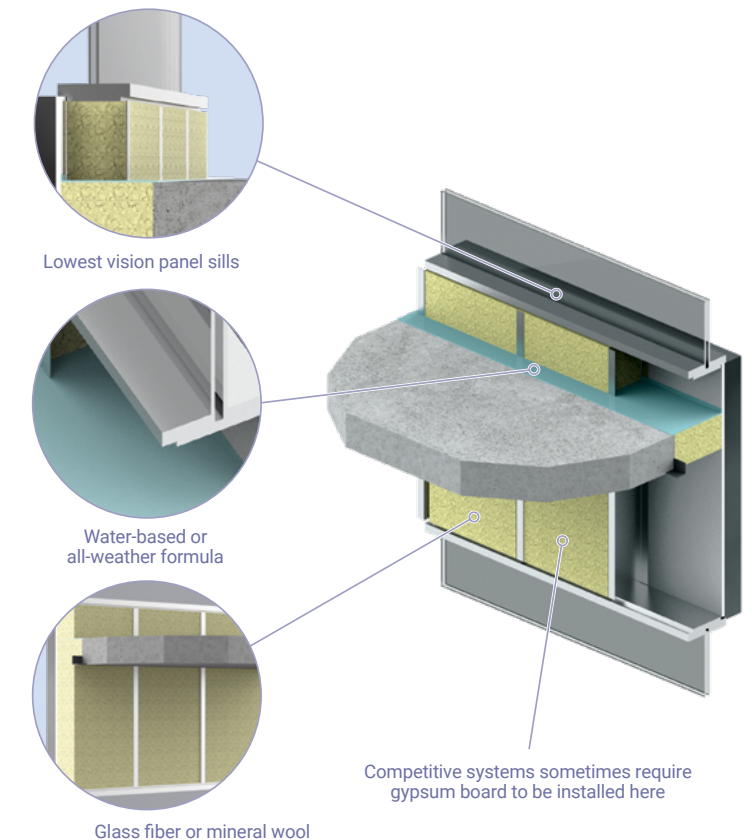
- Real world GFRC on tube steel frames with flex rods
- Insulated or non-insulated designs
- Multiple insulation manufacturers tested
- Documented L Ratings



## EIFS

STI has extensive testing with steel-framed exterior walls with EIFS or a variety of different veneers, offering the very best package of UL® Certified systems for common jobsite conditions.

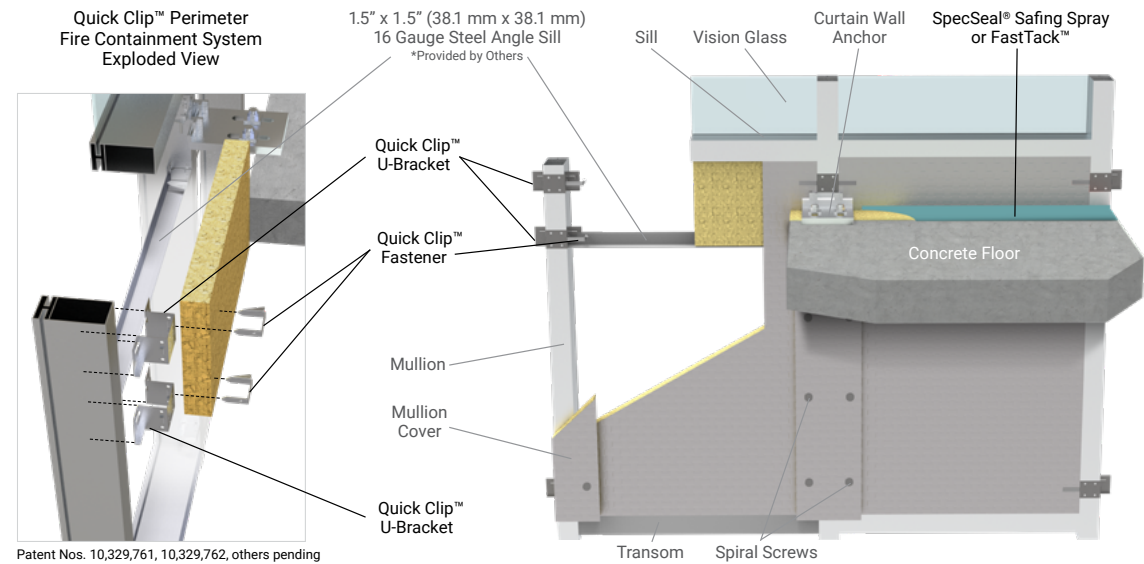
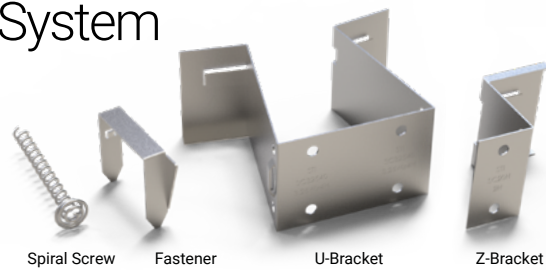
- Lowest sill heights for windows
- Common steel stud configurations
  - Coverage for cantilevered track conditions
  - King stud options
- Gypsum sheathing or cementitious backer units
- Multiple exterior finishes:
  - EIFS
  - Aluminum or steel siding
  - Brick veneer
  - Stucco
  - GFRC
- Glass fiber or mineral wool insulation options
- Penetrations through the safing slot
- Documented L Ratings
- No gypsum on underside of wall





## Quick Clip™ Field Installation System

**SpecSeal® Quick Clip™ Perimeter Fire Containment System** is designed to accelerate the installation of curtain wall insulation for perimeter fire containment systems. The system's unique U-brackets clip onto the mullions without direct attachment by screws to support the curtain wall insulation. Self-locking fasteners secure the insulation panels in place.



Patent Nos. 10,329,761, 10,329,762, others pending

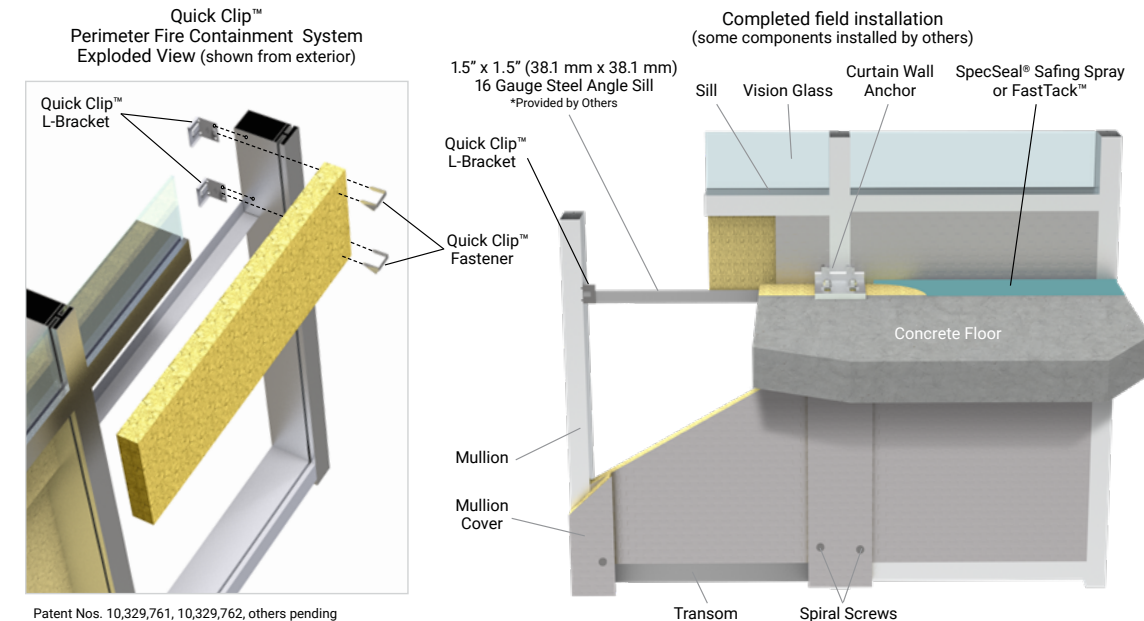
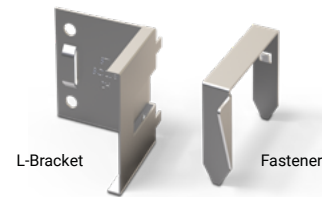


Scan or click for more information



## Quick Clip™ Factory Installation System

**SpecSeal® Quick Clip™ L-Bracket Perimeter Fire Containment System** is the fastest way to install curtain wall insulation for perimeter fire containment systems. Simply fasten the L-shaped brackets to the mullion, cut and fit the curtain wall insulation, and then secure the insulation in place with self-locking fasteners.



Patent Nos. 10,329,761, 10,329,762, others pending



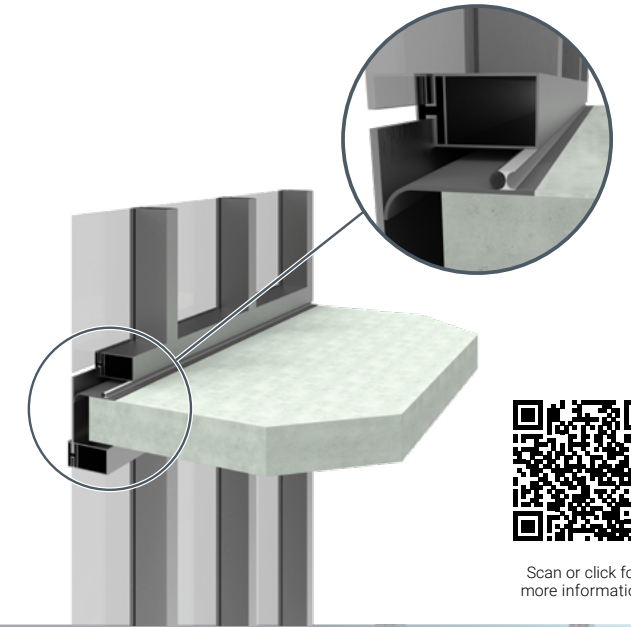
Scan or click for more information



## Window Wall Gasket

**SpecSeal® Window Wall Gasket** is an intumescent gasketing system incorporating a fiberglass inner webbing that is designed for edge of slab firestopping in Window Wall Construction. Window Wall Gasket's thin profile sits between your floor and aluminum framing; nesting behind your decorative panel exterior. Under fire exposure, the Window Wall Gasket rapidly expands to form a dense, highly insulative char.

- Designed for Window Wall and Hybrid Window Wall Construction
- Compatible with common exterior grade sealants
- Installs to top of floor or directly to panel framing
- Tested to ASTM E2307 for Window Wall Assemblies



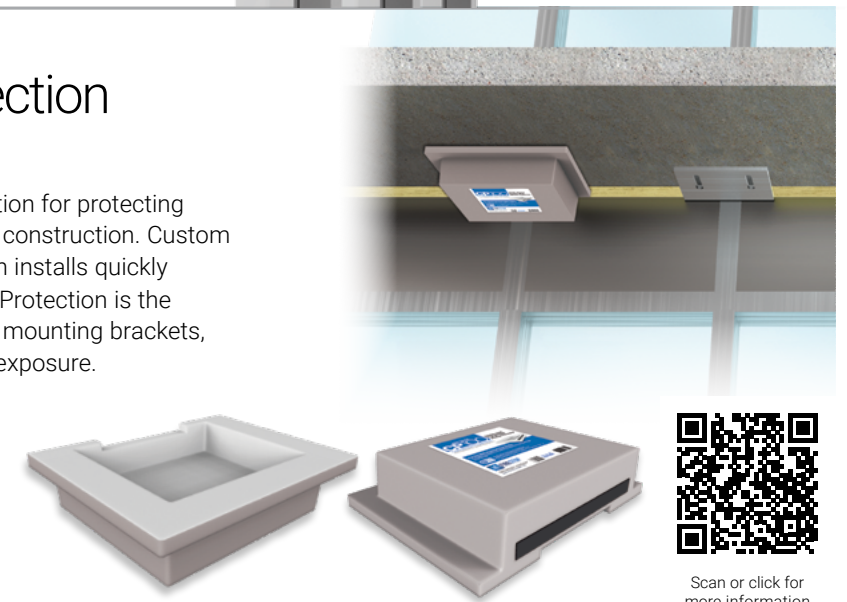
Scan or click for more information



## Connection Protection

**SpecSeal® Connection Protection** is the go-to solution for protecting underside mounted mullion brackets in curtain wall construction. Custom sized to your style of bracket, Connection Protection installs quickly with common job site tools. SpecSeal® Connection Protection is the only proven method for protecting exposed mullion mounting brackets, ensuring their integrity and performance under fire exposure.

- Eliminate Mineral wool wraps and Spray-Applied Fire Resistive Materials
- Professional fit and finished appearance
- No construction debris or waste
- Installs quickly with concrete screws, or powder actuated fasteners



Scan or click for more information



## Elastomeric Spray

**SpecSeal® AS200 Elastomeric Spray** is a latex-based elastomeric firestop spray for construction joint applications. AS200 cures to form a durable seal that resists the passage of the products of combustion while accommodating for high dynamic joint movement.

- Applied with airless spray equipment
- Highly flexible to accommodate for dynamic joint conditions
- Tested for up to 4 Hour fire resistance rating when tested to ASTM E1966 (UL2079) and CAN/ULC-S115



Scan or click for more information

**SpecSeal**  
**FastTack** Firestop Spray

**FastTack® Firestop Spray** is the ultimate in weather resistant firestop sprays. FastTack®'s hybrid copolymer formula was developed to counter the stalling effects of weather while providing unmatched washout resistance and the industry's fastest tack-free times. FastTack® outperforms and outlasts all competing firestop coatings providing the most versatile protection on the market.

- Spray up till the first drops of rain
- Tack Free within 35 minutes
- Resistant to Wind-Driven Rain, ASTM D6904
- Will not Washout
- Cures even in below freezing conditions



**SpecSeal**  
**ES** Elastomeric Firestop Sealant

**SpecSeal® ES Sealant** is a latex-based gun grade elastomeric firestop sealant designed for construction joint applications. Once cured, ES Sealant forms a flexible shield against the passage of fire and smoke. In dynamic joint conditions, ES Sealant is tested to accommodate up to 25% compression/extension of the installed joint width.

- Highly elastomeric gun grade sealant
- Tested for up to 4 Hour fire resistance rating when tested to ASTM E1966 (UL2079) and CAN/ULC-S115.
- Can be sanded and painted to match its surroundings
- Listed in over 45 UL® Tested Construction Joint Systems when tested to ASTM E1966 (UL2079) and CAN/ULC-S115



**SpecSeal**  
**AS200** Elastomeric Spray

**SpecSeal® AS200 Elastomeric Spray** is a latex-based elastomeric firestop spray for construction joint applications. AS200 cures to form a durable seal that resists the passage of the products of combustion while accommodating for high dynamic joint movement.

- Applied with airless spray equipment
- Highly flexible to accommodate for dynamic joint conditions
- Tested for up to 4 Hour fire resistance rating when tested to ASTM E1966 (UL2079) and CAN/ULC-S115



**SpecSeal**  
**LC** Endothermic Sealant

**SpecSeal® LC Endothermic Sealant** is a latex-based gun grade firestop sealant for construction joints and non-combustible penetrations. After application, LC Sealant cures to form a flexible seal against the propagation of fire. Under fire exposure, LC absorbs heat and release water vapor resisting the progress of smoke and flame.

- Installer Friendly, easily applied with standard caulking gun
- Can be troweled on for larger applications
- Tested for up to 4 Hours of fire resistance when tested to ASTM E1966/UL2079, ASTM E814/UL1479, and CAN/ULC-S115
- Listed in over 80 UL® Tested Firestop Systems





**SpecSeal**  
**SIL** Silicone Sealant

**SpecSeal® SIL300 Silicone Sealant** is a high performance silicone firestop sealant tested to resist the passage of smoke, flame and water through construction joints and through-penetrations. SIL300 Sealant cures to form a flexible seal and carries a Class 1 W Rating for water resistance (Per ANSI/UL1479).

- Available in a Gun Grade or Self Leveling
- Ozone and UV Resistant
- Excellent recovery from joint extension and compression
- Listed in over 175 UL® Tested Systems

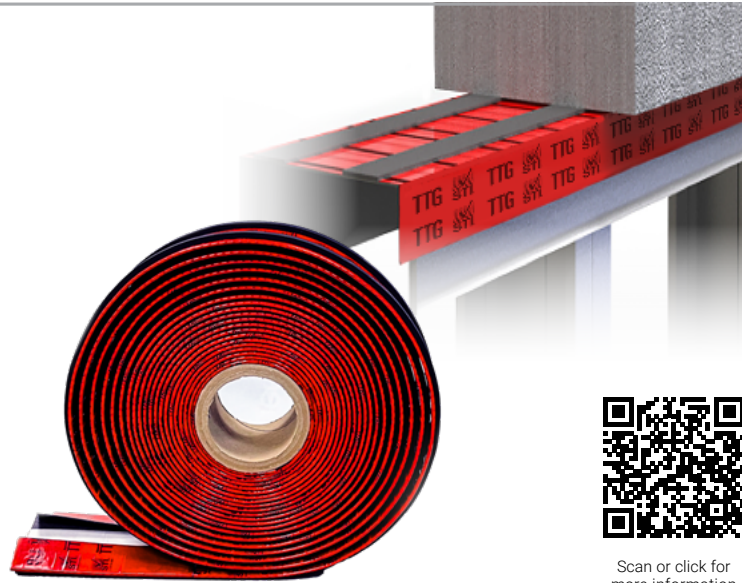


Scan or click for more information

**TTG** Track Top Gasket

**TTG Track Top Gasket** makes short work of construction joints in gypsum board construction. TTG eliminates the need for firestop sealants or sprays by firestopping as the wall is constructed. Track Top Gasket is easily cut to length with scissors or a sharp knife, installing quick with no waste.

- Works with any ceiling track
- Tested for both standard and shaft wall construction
- Allows for 100% compression and extension
- Available in Red for easy identification and inspection



Scan or click for more information

**SpeedFlex**  
**SFJP** SpeedFlex® Joint Profile System

**SpeedFlex® Joint Profile** partners with SpecSeal® spray-applied coatings to provide unsurpassed joint movement capabilities in standard gypsum board construction. SpeedFlex® Joint Profile eliminates the need for traditional forming materials allowing for reduced application times increasing productivity.

- Allows 100 % compression or extension
- Excellent remediation tool for cracked or deficient joints
- Cost effective alternative to traditional joint forming materials



Scan or click for more information

**SpecSeal**  
**SNS** Smoke'N'Sound Acoustical Spray

**SpecSeal® Smoke 'N' Sound Spray** is a high quality acrylic latex spray designed for static or minimally dynamic linear joints or gaps. SpecSeal® Smoke 'N' Sound spray is formulated to adhere to all common construction surfaces and may be applied using airless spray equipment or with a brush (for small applications and touch ups).

- Water-based—for easy installation and cleanup
- Excellent smoke seal
- Acoustically tested—reduces noise transmission
- Safe—low VOCs—no solvents, and non-halogenated
- Auto-bonding—allows spray to adhere to cured spray
- Paintable (when dry)



Scan or click for more information

**SpecSeal**  
**SNS** Smoke'N'Sound Acoustical Sealant

**SpecSeal® Smoke 'N' Sound Sealant** is a high quality acrylic latex sealant designed for sealing through-penetrations (such as pipes, conduits, cabling, busways, openings), membrane penetrations (such as p-traps and outlet boxes) in smoke rated walls.

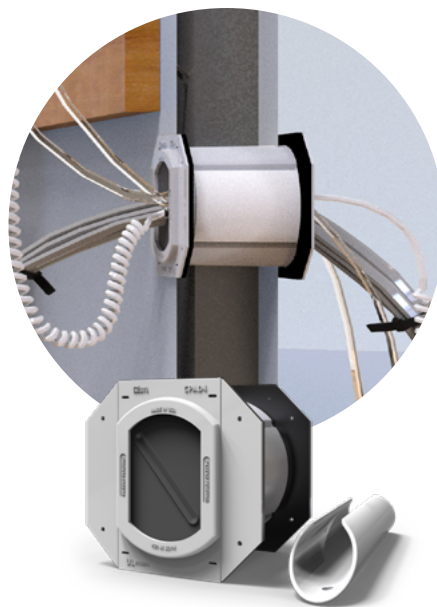
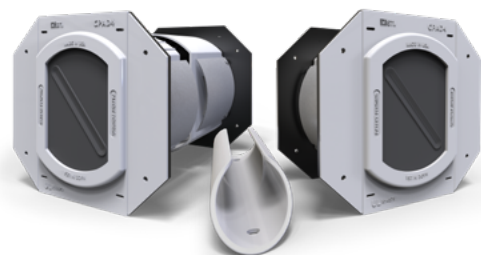
- Economical - high performance without the high price
- Water resistant - will not re-emulsify when dry
- Remains flexible - allows movement
- Acoustically tested, reduces noise transmission
- Paintable when dry



Scan or click for more information



PPE only goes so far. Add more protection for frontline healthcare workers. A better solution for passing temporary patient services through corridor walls.



When facilities choose to relocate infusion pumps and monitoring equipment to the corridor to manage caregiver and patient safety concerns, trip hazards and pinch points can present potential problems. Running cables, tubes, or other patient services under doors is not ideal. The Clinician Patient Access Device provides a safe pathway to easily pass all of these critical services.

The Clinician Patient Access Device is a better solution for passing temporary patient services through corridor walls. Its maintenance free design allows for up to 100% visual fill of cables, tubes, or other patient services while preventing trips and falls and maintaining a positive seal for particulate air and noise transfer.

- Allows contact-free patient monitoring for medical staff
- Self-sealing as services are added or removed
- Flush design for ADA compliance in corridors and patient rooms
- Fire-rated and NFPA 101 for use in 1/2 hour corridor walls



Scan or click for more information

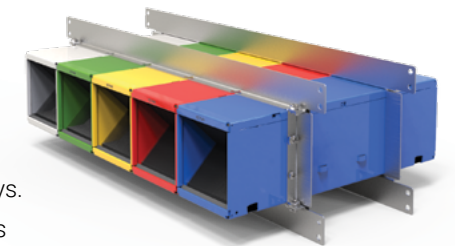
## Customized products made **exclusively for you.**

At STI, we know there are times when you need our products in special sizes or colors. Our customizing service can help your next project be more efficient and cost effective. Custom orders do come with minimums and lead times. We will work with you to get you what you need—when you need it.

To request a quote email us at [customquotes@stifirestop.com](mailto:customquotes@stifirestop.com)



### Fire-Rated Pathway Make your work stand out with EZ Path® Custom Color Fire-Rated Pathways.



Eliminate guesswork. Streamline work flow and increase the visibility of your cable pathways. Segregate cables and systems by use, type and vendor. Perform moves, adds, and changes more easily and head off potential problems by visually organizing your cable systems.

EZ Path® Custom Color Fire-Rated Pathways—**the only** fire-rated pathway available in colors. Specify your own colors. Custom attachments are also available.



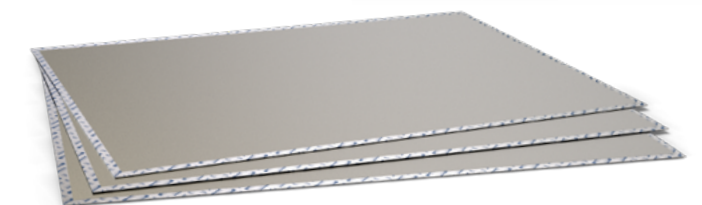
### Composite Sheet SpecSeal® Composite Sheet is the ideal solution for large openings where a permanent seal is required.



Composite Sheet is a lightweight, rigid fire resistant panel consisting of an intumescent layer bonded to a galvanized steel sheet reinforced with steel wire mesh covered with aluminum foil. Composite sheet partners with other SpecSeal® firestop products, such as Firestop Collars and EZ Path® Devices, to size down oversized openings. See page 31 for standard sizes. Custom sizes, materials and thicknesses available up to 48 in. x 96 in.

Email us at [customquotes@stifirestop.com](mailto:customquotes@stifirestop.com)

Minimums and lead times may apply.



# Firestop, Smoke, & Sound Solutions

## **Latin America** Regional Office

Av. Das Nacoes Unidas 8501, 17° andar  
Sao Paulo – SP, Brasil 05425-070  
Tel: +55 (11) 3434 6662  
Email: cs\_latin\_america@stifirestop.com

## **Middle East** Regional Office

The Bridge Tower, Office 202  
Dubai Sports City,  
Dubai, United Arab Emirates  
Tel: +971 55 872 11 89  
Email: cs\_middle\_east@stifirestop.com

## **North America** Corporate Headquarters

210 Evans Way  
Somerville, NJ 08876 USA  
Tel: +1 908 526 8000  
Email: customerservice@stifirestop.com

## **Southeast Asia** Regional Office

77, Robinson Road  
#13-00, Robinson 77  
Singapore 068896  
Tel: +65-96369000  
Email: cs\_south\_east\_asia@stifirestop.com

## **Europe** Regional Office

118 Avenue de France  
Paris, 75013, France  
Tel: +33 674 930 111  
Email: cs\_europe@stifirestop.com

## **China** Regional Office

Room 2111, Block C, South Tower, The Hub  
1068 Xin Gang East Road, Haizhu District  
Guangzhou, PR China 510335  
Tel: +86-20-89048831  
Email: cs\_greater\_china@stifirestop.com

## **India** Regional Office

Mumbai  
Maharashtra, India  
Tel: +91 98 19 79 69 15  
Email: cs\_india@stifirestop.com

