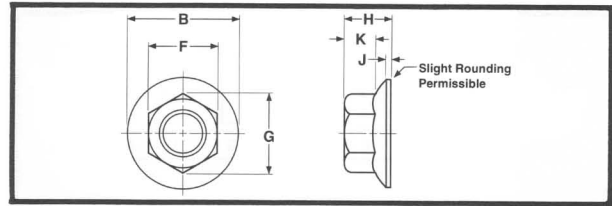
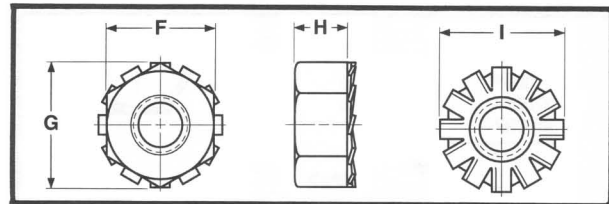


SERRATED FLANGE LOCK NUTS



Nominal Size or Basic Major Diameter of Thread	F Width Across Flats		G Width Across Corners		B Flange Diameter		H Nut Thickness		K Wrenching Length	J Flange Thickness
	Max.	Min.	Max.	Min.	Max.	Min.	Max.	Min.	Min.	Max.
	6 0.1380	0.312	0.302	0.361	0.342	0.422	0.406	0.171	0.156	0.10
8 0.1640	0.344	0.334	0.397	0.381	0.469	0.452	0.203	0.187	0.13	0.02
10 0.1900	0.375	0.365	0.433	0.416	0.500	0.480	0.219	0.203	0.13	0.03
12 0.2160	0.438	0.428	0.505	0.488	0.594	0.574	0.236	0.222	0.14	0.04
1/4 0.2500	0.438	0.428	0.505	0.488	0.594	0.574	0.236	0.222	0.14	0.04
5/16 0.3125	0.500	0.489	0.577	0.557	0.680	0.660	0.283	0.268	0.17	0.04
3/8 0.3750	0.562	0.551	0.650	0.628	0.750	0.728	0.347	0.330	0.23	0.04
7/16 0.4375	0.688	0.675	0.794	0.768	0.937	0.910	0.395	0.375	0.26	0.04
1/2 0.5000	0.750	0.736	0.866	0.840	1.031	1.000	0.458	0.437	0.31	0.05
5/8 0.6250	0.938	0.922	1.083	1.051	1.281	1.248	0.569	0.545	0.40	0.05
3/4 0.7500	1.125	1.088	1.299	1.240	1.500	1.460	0.675	0.627	0.46	0.06

"K" LOCK NUTS



Nominal Size or Basic Thread Diameter	F Width Across Flats			G Width Across Corners		H Thickness		I Washer Diameter
	Basic	Max.	Min.	Hex		Max.	Min.	Ref.
				Max.	Min.			
4 0.1120	1/4	0.250	0.241	0.289	0.275	0.098	0.087	0.281
6 0.1380	5/16	0.312	0.302	0.361	0.344	0.114	0.102	0.344
8 0.1640	11/32	0.344	0.332	0.397	0.378	0.130	0.117	0.375
10 0.1900	3/8	0.375	0.362	0.433	0.413	0.130	0.117	0.406
1/4 0.2500	7/16	0.438	0.423	0.505	0.482	0.193	0.178	0.500
5/16 0.3125	1/2	0.500	0.489	0.577	0.557	0.273	0.258	0.578
3/8 0.3750	9/16	0.562	0.551	0.650	0.628	0.385	0.365	0.656