

# DROP FORGED PAD EYES



## DROP FORGED PAD EYES

Stock No.	Part No.	Dimensions – Inches				*Overall Height	Weight Per 100 in Lbs.
		Eye		Shoulder			
		I.D.	O.D.	O.D.	*Thickness		
C-351	22005 7	1/4"	5/8"	5/8"	3/32"	3/4"	3.3
C-350	22010 1	3/4"	1-1/2"	1-1/16"	3/16"	1-5/8"	18.6
C-155	22015 6	1-3/16"	2-1/16"	1-11/16"	3/16"	2-3/8"	49
C-169	22020 0	1-1/4"	2-3/8"	2"	3/16"	2-7/8"	81

- Forged from carbon steel suitable for welding.
- Supplied with self-colored finish.
- \*Not including draft.



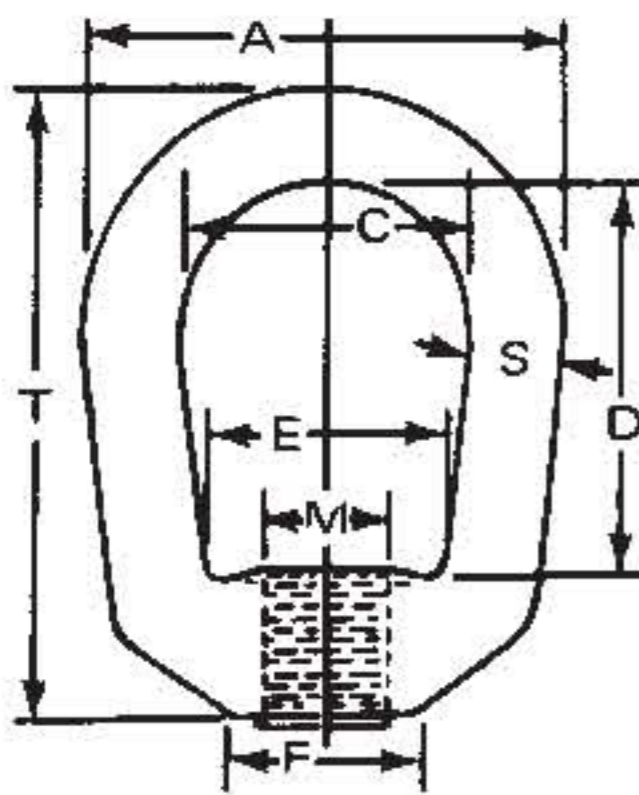
# DROP FORGED EYE NUTS



Regular

Stock Eye Nuts listed below, other than Blanks, are drilled and tapped standard regardless of finish. Both types drilled only, with special tapping or finish supplied to specification. Loads are based on a safety factor of 5 to 1. Blanks are self-colored.

NOTE: Loads shown apply to Eye Nuts only, based on a vertical pull, and not to any connecting bolt or stud.



## REGULAR EYE NUTS

Stock No.	Bail Size	Tap Size	Blank	Drilled & Tapped	
			Self-Colored Part No.	Self-Colored Part No.	Hot Galvanized Part No.
C-186A	1/4"	1/4"-20	16005 6	16255 5	16755 5
C-186B	1/4"	5/16"-18	16010 0	16260 9	16760 9
C-187A	5/16"	3/8"-16	16015 5	16265 4	16765 9
C-185B	3/8"	7/16"-14	16020 9	16270 8	16770 8
C-185A	3/8"	1/2"-13	16025 4	16275 3	16775 8
C-181A	1/2"	5/8"-11	16030 8	16280 7	16780 2
C-184A	5/8"	3/4"-10	16035 3	16285 2	16785 7
C-188A	3/4"	7/8"-9	16040 7	16290 6	16790 1
C-188B	3/4"	1"-8	16045 2	16295 1	16795 6

Some sizes also available in Stainless Steel. See page 48.

## SPECIFICATIONS

Stock No.	Tap Sizes		Dimensions – Inches							Working Load Limit (Tons)	Drilled & Tapped Wgt. Per 100	Blank Wgt. Per 100
	Std. M	Max. N	A	C	D	E	F	S	T			
C-186A	1/4"-20	3/8"	1-1/4"	3/4"	1-1/16"	19/32"	1/2"	1/4"	1-11/16"	.26	8.2	9
C-186B	5/16"-18	3/8"	1-1/4"	3/4"	1-1/16"	19/32"	1/2"	1/4"	1-11/16"	.42	8	9
C-187A	3/8"-16	7/16"	1-5/8"	1"	1-1/4"	3/4"	9/16"	5/16"	2-1/16"	.62	15.7	16
C-185B	7/16"-14	1/2"	2"	1-1/4"	1-1/2"	1"	13/16"	3/8"	2-1/2"	.85	29.7	31
C-185A	1/2"-13	1/2"	2"	1-1/4"	1-1/2"	1"	13/16"	3/8"	2-1/2"	1.12	29.3	31
C-181A	5/8"-11	3/4"	2-1/2"	1-1/2"	2"	1-3/16"	1"	1/2"	3-3/16"	1.8	61.5	66
C-184A	3/4"-10	7/8"	3"	1-3/4"	2-3/8"	1-3/8"	1-1/8"	5/8"	3-7/8"	2.6	103	112
C-188A	7/8"-9	1"	3-1/2"	2"	2-5/8"	1-5/8"	1-5/16"	3/4"	4-5/16"	3.6	163	183
C-188B	1"-8	1"	3-1/2"	2"	2-5/8"	1-5/8"	1-5/16"	3/4"	4-5/16"	3.6	161	183



# DROP FORGED HEAVY DUTY EYE NUTS

Stock Eye Nuts listed below, other than Blanks, are drilled and tapped standard regardless of finish. Both types drilled only, with special tapping or finish supplied to specification. Loads are based on a safety factor of 5 to 1. Self-colored finish is standard.

NOTE: Loads shown apply to Eye Nuts only, based on a vertical pull, and not to any connecting bolt or stud.

## SELF-COLORED - BLANK OR DRILLED AND TAPPED



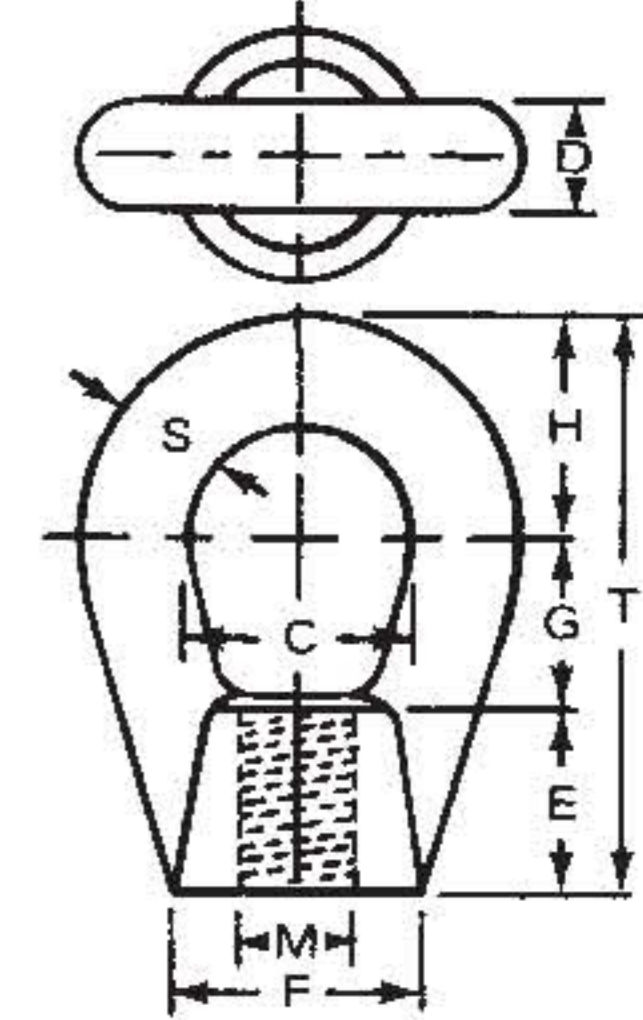
Stock No.	Bail Size	Blank		Drilled & Tapped	
		Part No.	Tap Size	Part No.	Part No.
100	5/16"	17005 5	3/8"-16	17255 4	
101	7/16"	17010 9	1/2"-13	17260 8	
102	9/16"	17015 4	5/8"-11	17265 3	
103	3/4"	17020 8	3/4"-10	17270 7	
104	7/8"	17025 3	7/8"-9	17275 2	
105	1"	17030 7	1"-8	17280 6	
105A	1"	17035 2	1-1/8"-7	17285 1	
106	1-1/4"	17040 6	1-1/4"-7	17290 5	
107	1-3/8"	17045 1	1-1/2"-6	17295 0	



Blank



Drilled & Tapped



## SPECIFICATIONS

Stock No.	Dimensions - Inches									Working Load Limit (Tons)	Drilled & Tapped Wgt. Per 100	Blank Wgt. Per 100
	C	S	D	M	F	E	G	H	T			
100	7/8"	5/16"	5/16"	3/8-16"	3/4"	3/4"	3/4"	3/4"	2-1/4"	.9	15	16
101	1-1/8"	7/16"	7/16"	1/2-13"	1"	1"	1"	1"	3"	1.8	37.5	43
102	1-3/8"	9/16"	9/16"	5/8-11"	1-1/4"	1-1/4"	1-1/4"	1-1/4"	3-3/4"	2.9	82.5	94
103	1-1/2"	3/4"	3/4"	3/4-10"	1-3/4"	1-1/4"	1-1/8"	1-1/2"	3-7/8"	5.3	145	160
104	1-5/8"	7/8"	7/8"	7/8-9"	2"	1-1/4"	1"	1-11/16"	3-15/16"	7.2	202.5	210
105	1-3/4"	1"	1"	1-8"	2-1/4"	1-5/8"	1-1/4"	1-7/8"	4-3/4"	9.4	327.5	340
105A	1-3/4"	1"	1"	1-1/8-7"	2-1/4"	1-5/8"	1-1/4"	1-7/8"	4-3/4"	11.3	297	340
106	2"	1-1/4"	1-1/4"	1-1/4-7"	2-7/8"	1-7/8"	1-3/8"	2-1/4"	5-1/2"	14.7	550	623
107	2-1/2"	1-3/8"	1-3/8"	1-1/2-6"	3-1/8"	2-1/8"	1-3/4"	2-5/8"	6-1/2"	17.8	807.5	919

